



ECROS
group of companies



LABORATORY FURNITURE

ECOLOGIA

LABORATORY FURNITURE

PRAKTIKA

LABORATORY
FURNITURE FOR SCHOOLS

EVRIKA



2018
PRODUCT OVERVIEW

About ECROS Group

ECROS Group was established in 1990. Over the years of its successful work, the group has become one of the largest manufacturers of laboratory furniture in Russia. Furniture manufacturing includes metal laboratory furniture ECOLOGIA, PRAKTIKA and lab furniture for schools EVRIKA. Besides serial production, ECROS Group produces made-to-order metal constructions.

Our products are the result of our own engineering development. Having analyzed the needs of our modern laboratories, our engineers developed brand new laboratory furniture distinguished by its comfort and robustness. ECROS Group is constantly working to improve its laboratory furniture and equipment investing in development and manufacturing of new models using the latest technologies and materials.

From the very beginning our Group has specialized in the manufacture of completely metal lab furniture. Our engineers always focuses on ergonomic design, long lifetime and people's safety in laboratories when developing new models. Necessary requirements documents GOST, DIN and BS are used during development process. ECROS Group is a fully integrated manufacturer: starting from product development and its manufacture to finished product

Only high-test metal products and parts of well-known brands are used in the manufacture of our lab furniture. We guarantee product reliability of each made item.

ECROS Group is constantly developing and each new model confirms that Russian product can be as high-level as one of world's leading brand.

Our employees have many years' experience in scientific laboratories. We are always ready to answer all the questions and help you to choose lab furniture you need or create design for your laboratory facilities. Besides, we provide such additional services as supervised installation and after-sales service of the lab furniture. Our engineers take into account all the customer preferences and design features when developing new products.

Certificates



CONTENTS



Laboratory furniture
ECOLOGIA 3



Laboratory furniture
PRAKTIKA 29



Laboratory furniture for schools
EVRIKA 43



Laboratory
furniture
for general use 54



LABORATORY FURNITURE «ECOLOGIA»

ECOLOGIA is general-purpose furniture that allows almost any combinations. ECOLOGIA product line is made of metal that ensures robustness, stability and durability of the lab furniture.

ECOLOGIA laboratory furniture allows choosing different worktop materials for any types of laboratories.

ECOLOGIA lab furniture stands either on adjustable rests or on rolling castors.

Contents

Laboratory bench.....	4
Auxiliary bench	11
Auxiliary table	12
Side table.....	13
Balance table	14
Shelving	16
Titration bench.....	17
Laboratory cabinet.....	18
Laboratory sink bench	21
Fume cupboard	24
Fume cupboard with water inlet.....	25
Fume cupboard with sink	26



LABORATORY BENCH

Laboratory bench is designed for work space arrangement and equipment mounting during physical and chemical researches. The laboratory bench can be selected with various dimensions and worktop materials. The worktop can be loaded with up to 300 kg. The worktop width can be increased up to 850 mm for shelves installation.

Laboratory benches can be completed with a standing unit, standing unit with a bench, shelves and mobile cabinets. The laboratory benches stand on adjustable feet. Supplied non-assembled.



Lamp with sockets

Laboratory bench

PRODUCT CODE	ITEM AND DIMENSIONS (L X W X H)	WORKTOP MATERIAL	WEIGHT KG/LBS
56.0496.00.04	Laboratory bench 1500x600x850 mm / 59.1"x23.6"x33.5"	White laminate	33 / 72
56.0496.00.14	Laboratory bench 1500x600x850 mm / 59.1"x23.6"x33.5"	Gray laminate	33 / 72
56.0496.00.08	Laboratory bench 1500x600x850 mm / 59.1"x23.6"x33.5"	Labgrade	39 / 85
56.0496.00.18	Laboratory bench 1515x610x850 mm / 59.6"x24"x33.5"	Labgrade-light	36 / 79
56.0496.00.13	Laboratory bench 1515x610x850 mm / 59.6"x24"x33.5"	Ceramic granite	46 / 101
56.0496.00.03	Laboratory bench 1515x610x850 mm / 59.6"x24"x33.5"	Ceramics	46 / 101



Laboratory bench

PRODUCT CODE	ITEM AND DIMENSIONS (L X W X H)	WORKTOP MATERIAL	WEIGHT KG/LBS
56.0496.01.04	Laboratory bench 1500x850x850 mm / 59.1"x33.5"x33.5"	White laminate	40 / 88
56.0496.01.14	Laboratory bench 1500x850x850 mm / 59.1"x33.5"x33.5"	Gray laminate	40 / 88
56.0496.01.03	Laboratory bench 1515x850x850 mm / 59.6"x33.5"x33.5"	Ceramics	53 / 116
56.0496.01.13	Laboratory bench 1515x850x850 mm / 59.6"x33.5"x33.5"	Ceramic granite	53 / 116
56.0496.01.08	Laboratory bench 1500x850x850 mm / 59.1"x33.5"x33.5"	Labgrade	48 / 105
56.0496.01.18	Laboratory bench 1515x850x850 mm / 59.6"x33.5"x33.5"	Labgrade-light	48 / 94

Standard complete set:
Frame, worktop.
It's possible to install shelves on the worktop.



LABORATORY BENCH



Laboratory bench with 2 drawers and electrical equipment

PRODUCT CODE	ITEM AND DIMENSIONS (L X W X H)	WORKTOP MATERIAL	WEIGHT KG/LBS
56.0486.00.04	Laboratory bench 1500x600x850 mm / 59.1"x23.6"x33.5"	White laminate	43 / 94
56.0486.00.14	Laboratory bench 1500x600x850 mm / 59.1"x23.6"x33.5"	Gray laminate	43 / 94
56.0486.00.08	Laboratory bench 1500x600x850 mm / 59.1"x23.6"x33.5"	Labgrade	49 / 108
56.0486.00.18	Laboratory bench 1515x610x850 mm / 59.6"x24"x33.5"	Labgrade-light	46 / 101
56.0486.00.13	Laboratory bench 1515x610x850 mm / 59.6"x24"x33.5"	Ceramic granite	50 / 110
56.0486.00.03	Laboratory bench 1515x610x850 mm / 59.6"x24"x33.5"	Ceramics	50 / 110
XX XXX XX XX-01	Supplied pre-assembled		

Standard complete set:
2 drawers, 2 splash-proof sockets, electrical break automat 10A, connector cord (2m length)

Laboratory bench with 2 drawers and electrical equipment

PRODUCT CODE	ITEM AND DIMENSIONS (L X W X H)	WORKTOP MATERIAL	WEIGHT KG/LBS
56.0486.01.04	Laboratory bench 1500x850x850 mm / 59.1"x33.5"x33.5"	White laminate	50 / 110
56.0486.01.14	Laboratory bench 1500x850x850 mm / 59.1"x33.5"x33.5"	Gray laminate	50 / 110
56.0486.01.08	Laboratory bench 1500x850x850 mm / 59.1"x33.5"x33.5"	Labgrade	58 / 127
56.0486.01.18	Laboratory bench 1515x850x850 mm / 59.6"x33.5"x33.5"	Labgrade-light	58 / 127
56.0486.01.13	Laboratory bench 1515x850x850 mm / 59.6"x33.5"x33.5"	Ceramic granite	53 / 116
56.0486.01.03	Laboratory bench 1515x850x850 mm / 59.6"x33.5"x33.5"	Ceramics	63 / 138
XX XXX XX XX-01	Supplied pre-assembled		

Standard complete set:
2 drawers, 2 splash-proof sockets, electrical break automat 10A, connector cord (2m length)
It's possible to install shelves on the worktop.



LABORATORY BENCH



Three-wire socket



Polyethylene castor wheels



Sliding tray



Laboratory bench with 2 drawers, electrical equipment, shelf with lighting unit and 2 sockets

PRODUCT CODE	ITEM AND DIMENSIONS (L X W X H)	WORKTOP MATERIAL	WEIGHT KG/LBS
56.0486.11.04	Laboratory bench 1500x850x1300 mm / 59.1"x33.5"x51.2"	White laminate	57 / 125
56.0486.11.14	Laboratory bench 1500x850x1300 mm / 59.1"x33.5"x51.2"	Gray laminate	57 / 125
56.0486.11.08	Laboratory bench 1500x850x1300 mm / 59.1"x33.5"x51.2"	Labgrade	65 / 143
56.0486.11.18	Laboratory bench 1515x850x1300 mm / 59.6"x33.5"x51.2"	Labgrade-light	60 / 132
56.0486.11.03	Laboratory bench 1515x850x1300 mm / 59.6"x33.5"x51.2"	Ceramics	70 / 154
XX XXX XX XX-01	Provided pre-assembled		

Standard complete set:
2 drawers, 2 splash-proof sockets, electrical break automat 10A, connector cord (2m length), shelf with lighting unit and 2 sockets.



Laboratory bench with sliding tray, 2 drawers and electric outlet

PRODUCT CODE	ITEM AND DIMENSIONS (L X W X H)	WORKTOP MATERIAL	WEIGHT KG/LBS
56.0490.00.04	Laboratory bench 1500x600x850 mm / 59.1"x23.6"x33.5"	White laminate	46 / 101
56.0490.00.14	Laboratory bench 1500x600x850 mm / 59.1"x23.6"x33.5"	Gray laminate	46 / 101
56.0490.00.08	Laboratory bench 1500x600x850 mm / 59.1"x23.6"x33.5"	Labgrade	52 / 114
56.0490.00.18	Laboratory bench 1515x610x850 mm / 59.6"x24"x33.5"	Labgrade-light	49 / 108
56.0490.00.13	Laboratory bench 1515x610x850 mm / 59.6"x24"x33.5"	Ceramic granite	55 / 121
56.0490.00.03	Laboratory bench 1515x610x850 mm / 59.6"x24"x33.5"	Ceramics	55 / 121
XX XXX XX XX-01	Provided pre-assembled		

Standard complete set:
2 drawers, 2 splash-proof sockets, electrical break automat 10A, connector cord (2m length).
It's possible to install shelf on the worktop.



LABORATORY BENCH



Laboratory bench with sliding tray, 2 drawers and electrical equipment

PRODUCT CODE	ITEM AND DIMENSIONS (L X W X H)	WORKTOP MATERIAL	WEIGHT KG/LBS
56.0490.01.04	Laboratory bench 1500x850x850 mm / 59.1"x33.5"x33.5"	White laminate	53 / 116
56.0490.01.14	Laboratory bench 1500x850x850 mm / 59.1"x33.5"x33.5"	Gray laminate	53 / 116
56.0490.01.08	Laboratory bench 1500x850x850 mm / 59.1"x33.5"x33.5"	Labgrade	61 / 134
56.0490.01.18	Laboratory bench 1515x850x850 mm / 59.6"x33.5"x33.5"	Labgrade-light	56 / 123
56.0490.01.13	Laboratory bench 1515x850x850 mm / 59.6"x33.5"x33.5"	Ceramic granite	66 / 145
56.0490.01.03	Laboratory bench 1515x850x850 mm / 59.6"x33.5"x33.5"	Ceramics	66 / 145
XX XXX XX XX-01	Supplied pre-assembled		

Standard complete set:
2 drawers, 2 splash-proof sockets, electrical break automat 10A, connector cord (2m length).

Laboratory bench with sliding tray, 2 drawers, shelf with lighting unit and 2 sockets

PRODUCT CODE	ITEM AND DIMENSIONS (L X W X H)	WORKTOP MATERIAL	WEIGHT KG/LBS
56.0490.11.04	Laboratory bench 1500x850x1300 mm / 59.1"x33.5"x51.2"	White laminate	60 / 132
56.0490.11.14	Laboratory bench 1500x850x1300 mm / 59.1"x33.5"x51.2"	Gray laminate	60 / 132
56.0490.11.08	Laboratory bench 1500x850x1300 mm / 59.1"x33.5"x51.2"	Labgrade	68 / 149
56.0490.11.18	Laboratory bench 1515x850x1300 mm / 59.6"x33.5"x51.2"	Labgrade-light	63 / 138
56.0490.11.03	Laboratory bench 1515x850x1300 mm / 59.6"x33.5"x51.2"	Ceramics	73 / 160
XX XXX XX XX-01	Supplied pre-assembled		

Standard complete set:
2 drawers, 2 splash-proof sockets, electrical break automat 10A, connector cord (2m length), shelf with lighting unit and 2 sockets. It's possible to install shelf on the worktop.



LABORATORY BENCH

Laboratory bench is designed for work space arrangements and equipment mounting during physical and chemical researches. The laboratory benches can be selected with various dimensions and worktop materials. The worktop can be loaded with up to 300 kg.

Laboratory bench can be completed with a standing unit, standing unit with a workbench,

shelves and mobile cabinets. The laboratory bench stands on adjustable feet for floor unevenness compensation. Supplied non-assembled.

Laboratory bench

PRODUCT CODE	ITEM AND DIMENSIONS (L X W X H)	WORKTOP MATERIAL	WEIGHT KG/LBS
56.0493.00.04	Laboratory bench 1200x600x850 mm / 47.2"x23.6"x33.5"	White laminate	29 / 63
56.0493.00.14	Laboratory bench 1200x600x850 mm / 47.2"x23.6"x33.5"	Gray laminate	29 / 63
56.0493.00.08	Laboratory bench 1200x600x850 mm / 47.2"x23.6"x33.5"	Labgrade	34 / 74
56.0493.00.18	Laboratory bench 1210x610x850 mm / 47.6"x24"x33.5"	Labgrade-light	32 / 70
56.0493.00.02	Laboratory bench 1200x600x850 mm / 47.2"x23.6"x33.5"	Durcon	39 / 85
56.0493.00.12	Laboratory bench 1213x613x850 mm / 47.8"x24.1"x33.5" (with flange)	Durcon	41 / 90
56.0493.00.06	Laboratory bench 1200x600x850 mm / 47.2"x23.6"x33.5"	Stainless steel	29 / 63
56.0493.00.13	Laboratory bench 1210x610x850 mm / 47.6"x24"x33.5"	Ceramic granite	37 / 81
56.0493.00.03	Laboratory bench 1210x610x850 mm / 47.6"x24"x33.5"	Ceramics	37 / 81

Standard complete set:
Frame assembly, worktop

Laboratory bench

PRODUCT CODE	ITEM AND DIMENSIONS (L X W X H)	WORKTOP MATERIAL	WEIGHT KG/LBS
56.0493.01.04	Laboratory bench 1200x850x850 mm / 47.2"x33.5"x33.5"	White laminate	35 / 77
56.0493.01.14	Laboratory bench 1200x850x850 mm / 47.2"x33.5"x33.5"	Gray laminate	35 / 77
56.0493.01.08	Laboratory bench 1200x850x850 mm / 47.2"x33.5"x33.5"	Labgrade	42 / 92
56.0493.01.18	Laboratory bench 1210x850x850 mm / 47.6"x33.5"x33.5"	Labgrade-light	38 / 83
56.0493.01.13	Laboratory bench 1210x850x850 mm / 47.6"x33.5"x33.5"	Ceramic granite	46 / 101
56.0493.01.03	Laboratory bench 1210x850x850 mm / 47.6"x33.5"x33.5"	Ceramics	46 / 101

Standard complete set:
Frame assembly, worktop

Laboratory bench with 2 drawers and electrical equipment

PRODUCT CODE	ITEM AND DIMENSIONS (L X W X H)	WORKTOP MATERIAL	WEIGHT KG/LBS
56.0487.00.04	Laboratory bench 1200x600x850 mm / 47.2"x23.6"x33.5"	White laminate	39 / 85
56.0487.00.14	Laboratory bench 1200x600x850 mm / 47.2"x23.6"x33.5"	Gray laminate	39 / 85
56.0487.00.08	Laboratory bench 1200x600x850 mm / 47.2"x23.6"x33.5"	Labgrade	44 / 97
56.0487.00.18	Laboratory bench 1210x610x850 mm / 47.6"x24"x33.5"	Labgrade-light	42 / 92
56.0487.00.02	Laboratory bench 1200x600x850 mm / 47.2"x23.6"x33.5"	Durcon	47 / 103
56.0487.00.12	Laboratory bench 1213x613x850 mm / 47.8"x24.1"x33.5" (with flange)	Durcon	49 / 108
56.0487.00.06	Laboratory bench 1200x600x850 mm / 47.2"x23.6"x33.5"	Stainless steel	39 / 88
56.0487.00.13	Laboratory bench 1210x610x850 mm / 47.6"x24"x33.5"	Ceramic granite	47 / 103
56.0487.00.03	Laboratory bench 1210x610x850 mm / 47.6"x24"x33.5"	Ceramics	47 / 103
XXXXXXXX-01	Supplied pre-assembled		

Standard complete set:
Frame assembly, worktop, 2 drawers, 2 sockets, electrical break automat, connector cord



LABORATORY BENCH



Laboratory bench with 2 drawers and electrical equipment

PRODUCT CODE	ITEM AND DIMENSIONS (L X W X H)	WORKTOP MATERIAL	WEIGHT KG/LBS
56.0487.01.04	Laboratory bench 1200x850x850 mm / 47.2"x33.5"x33.5"	White laminate	45 / 99
56.0487.01.14	Laboratory bench 1200x850x850 mm / 47.2"x33.5"x33.5"	Gray laminate	45 / 99
56.0487.01.08	Laboratory bench 1200x850x850 mm / 47.2"x33.5"x33.5"	Labgrade	52 / 114
56.0487.01.18	Laboratory bench 1210x850x850 mm / 47.6"x33.5"x33.5"	Labgrade-light	48 / 105
56.0487.01.13	Laboratory bench 1210x850x850 mm / 47.6"x33.5"x33.5"	Ceramic granite	56 / 123
56.0487.01.03	Laboratory bench 1210x850x850 mm / 47.6"x33.5"x33.5"	Ceramics	56 / 123
XXXXXXXX-01	Supplied pre-assembled		

Standard complete set:
frame assembly, worktop, 2 drawers, 2 sockets, electrical break automat, connector cord



LABORATORY BENCH



Laboratory bench with 2 drawers, electrical equipment and shelf with lighting unit and 2 sockets

PRODUCT CODE	ITEM AND DIMENSIONS (L X W X H)	WORKTOP MATERIAL	WEIGHT KG/LBS
56.0487.11.04	Laboratory bench 1200x850x1300 mm / 47.2"x33.5"x51.2"	White laminate	51 / 112
56.0487.11.14	Laboratory bench 1200x850x1300 mm / 47.2"x33.5"x51.2"	Gray laminate	51 / 112
56.0487.11.08	Laboratory bench 1200x850x1300 mm / 47.2"x33.5"x51.2"	Labgrade	58 / 127
56.0487.11.18	Laboratory bench 1210x850x1300 mm / 47.6"x33.5"x51.2"	Labgrade-light	54 / 119
56.0487.11.03	Laboratory bench 1210x850x1300 mm / 47.6"x33.5"x51.2"	Ceramics	62 / 136
XXXXXXXX-01	Supplied pre-assembled		

Standard complete set:

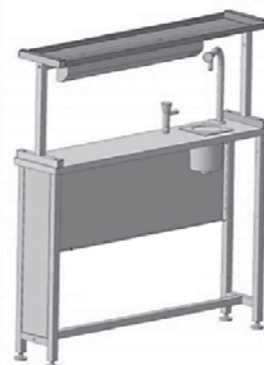
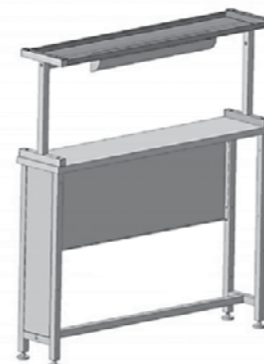
2 drawers, 2 splash-proof sockets, electrical break automat 10A, 2m length connector cord (grounded), shelf with lighting unit and 2 sockets

Laboratory bench with 2 drawers and electrical equipment

PRODUCT CODE	ITEM AND DIMENSIONS (L X W X H)	WORKTOP MATERIAL	WEIGHT KG/LBS
56.0591.01.04	Laboratory bench 1200x850x850 mm / 47.2"x33.5"x33.5"	White laminate	47 / 103
56.0591.01.14	Laboratory bench 1200x850x850 mm / 47.2"x33.5"x33.5"	Gray laminate	47 / 103
56.0591.01.08	Laboratory bench 1200x850x850 mm / 47.2"x33.5"x33.5"	Labgrade	55 / 121
XXXXXXXX-01	Supplied pre-assembled		

Standard complete set:

2 drawers, 2 splash-proof sockets, electrical break automat 10A, 2m length connector cord (grounded)



AUXILIARY BENCH

Auxiliary bench is used as a component for laboratory bench. The unit is intended for building of wall work benches and double (island) work benches. Auxiliary bench can be loaded with up 30 kg. The complete set includes a shelf with lighting unit and 2 sockets.

Technical data:

Height, mm - 1300 (including shelf)

Worktop dimensions (W x L x H), mm - 250x1200x850

Auxiliary bench stands on adjustable feet.

Auxiliary bench with water inlet are supplied pre-assembled.

Auxiliary bench units without water inlet are supplied either pre-assembled or non-assembled.



Auxiliary bench

PRODUCT CODE	ITEM AND DIMENSIONS (L X W X H)	WORKTOP MATERIAL	WEIGHT KG/LBS
56.0492.10.04	Auxiliary bench 1200x250x1300 mm / 47.2"x9.8"x51.2" + shelf with lighting unit and 2 sockets	White laminate	26 / 57
56.0492.10.14	Auxiliary bench 1200x250x1300 mm / 47.2"x9.8"x51.2" + shelf with lighting unit and 2 sockets	Gray laminate	26 / 57
56.0492.10.08	Auxiliary bench 1200x250x1300 mm / 47.2"x9.8"x51.2" + shelf with lighting unit and 2 sockets	Labgrade	29 / 63
56.0492.10.02	Auxiliary bench 1200x250x1300 mm / 47.2"x9.8"x51.2" + shelf with lighting unit and 2 sockets	Durcon	31 / 68
56.0492.10.06	Auxiliary bench 1200x250x1300 mm / 47.2"x9.8"x51.2" + shelf with lighting unit and 2 sockets	Stainless steel	26 / 57

Auxiliary bench

PRODUCT CODE	ITEM AND DIMENSIONS (L X W X H)	WORKTOP MATERIAL	WEIGHT KG/LBS
56.0492.11.08-01	Auxiliary bench with water inlet 1200x250x1300 mm / 47.2"x9.8"x51.2" + shelf with lighting unit and 2 sockets	Labgrade	31 / 68
56.0492.11.02-01	Auxiliary bench with water inlet 1200x250x1300 mm / 47.2"x9.8"x51.2" + shelf with lighting unit and 2 sockets	Durcon	34 / 74
56.0492.11.06-01	Auxiliary bench with water inlet 1200x250x1300 mm / 47.2"x9.8"x51.2" + shelf with lighting unit and 2 sockets	Stainless steel	28 / 61

Auxiliary bench base is supplied pre-assembled.

Shelf is supplied non-assembled.

Water inlet is installed by a customer.



AUXILIARY TABLE



Writing table

Writing tables stand on adjustable feet for floor unevenness compensation.
Supplied non-assembled.

PRODUCT CODE	ITEM AND DIMENSIONS (L X W X H)	WORKTOP MATERIAL	WEIGHT KG/LBS
56.0501.00.04	Writing table 1200x600x750 mm / 47.2"x23.6"x29.5"	White laminate	29 / 63
56.0501.00.14	Writing table 1200x600x750 mm / 47.2"x23.6"x29.5"	Gray laminate	29 / 63
56.0501.00.08	Writing table 1200x600x750 mm / 47.2"x23.6"x29.5"	Labgrade	34 / 74

Computer table

All computer tables include support for computer system unit and sliding tray for keyboard.

Computer tables stand on adjustable feet for floor unevenness compensation.
Supplied non-assembled.

PRODUCT CODE	ITEM AND DIMENSIONS (L X W X H)	WORKTOP MATERIAL	WEIGHT KG/LBS
56.0526.00.04	Computer table 850x600x750 mm / 33.5"x23.6"x29.5"	White laminate	28 / 61
56.0526.00.14	Computer table 850x600x750 mm / 33.5"x23.6"x29.5"	Gray laminate	28 / 61
56.0526.00.08	Computer table 850x600x750 mm / 33.5"x23.6"x29.5"	Labgrade	33 / 72

Mobile table

Mobile tables are intended for transportation and storage of consumable and auxiliary materials.

Supplied either pre-assembled or non-assembled.

PRODUCT CODE	ITEM AND DIMENSIONS (L X W X H)	WORKTOP MATERIAL	WEIGHT KG/LBS
56.0527.00.04	Mobile table 600x550x640 mm / 23.6"x21.7"x25.2"	White laminate	15 / 33
56.0527.00.14	Mobile table 600x550x640 mm / 23.6"x21.7"x25.2"	Gray laminate	15 / 33
56.0527.00.08	Mobile table 600x550x640 mm / 23.6"x21.7"x25.2"	Labgrade	17 / 37
56.0527.00.00	Mobile table 600x550x640 mm / 23.6"x21.7"x25.2"	Steel	13 / 28
XXXXXXXX-01	Provided pre-assembled		



AUXILIARY TABLE



Side table

Side tables are intended to form additional worktop for laboratory benches.

The side tables stand on adjustable feet for floor unevenness compensation.
Supplied non-assembled.

PRODUCT CODE	ITEM AND DIMENSIONS (L X W X H)	WORKTOP MATERIAL	WEIGHT KG/LBS
56.0494.00.04	Side table 600x600x850 mm / 23.6"x23.6"x33.5"	White laminate	17 / 37
56.0494.00.14	Side table 600x600x850 mm / 23.6"x23.6"x33.5"	Gray laminate	17 / 37
56.0494.00.08	Side table 600x600x850 mm / 23.6"x23.6"x33.5"	Labgrade	20 / 44
56.0494.00.18	Side table 610x610x850 mm / 24"x24"x33.5"	Labgrade-light	19 / 41
56.0494.00.13	Side table 610x610x850 mm / 24"x24"x33.5"	Ceramic granite	21 / 46
56.0494.00.03	Side table 610x610x850 mm / 24"x24"x33.5"	Ceramics	21 / 46

PRODUCT CODE	ITEM AND DIMENSIONS (L X W X H)	WORKTOP MATERIAL	WEIGHT KG/LBS
56.0494.01.04	Side table 600x850x850 mm / 23.6"x29.5"x29.5"	White laminate	20 / 44
56.0494.01.14	Side table 600x850x850 mm / 23.6"x29.5"x29.5"	Gray laminate	20 / 44
56.0494.01.08	Side table 600x850x850 mm / 23.6"x29.5"x29.5"	Labgrade	24 / 52
56.0494.01.18	Side table 610x850x850 mm / 24"x29.5"x29.5"	Labgrade-light	22 / 48
56.0494.01.13	Side table 610x850x850 mm / 24"x29.5"x29.5"	Ceramic granite	26 / 57
56.0494.01.03	Side table 610x850x850 mm / 24"x29.5"x29.5"	Ceramics	26 / 57

PRODUCT CODE	ITEM AND DIMENSIONS (L X W X H)	WORKTOP MATERIAL	WEIGHT KG/LBS
56.0495.01.04	Side table 850x850x850 mm / 33.5"x33.5"x33.5"	White laminate	24 / 52
56.0495.01.14	Side table 850x850x850 mm / 33.5"x33.5"x33.5"	Gray laminate	24 / 52
56.0495.01.08	Side table 850x850x850 mm / 33.5"x33.5"x33.5"	Labgrade	29 / 63
56.0495.01.18	Side table 850x850x850 mm / 33.5"x33.5"x33.5"	Labgrade-light	27 / 59
56.0495.01.13	Side table 850x850x850 mm / 33.5"x33.5"x33.5"	Ceramic granite	31 / 68
56.0495.01.03	Side table 850x850x850 mm / 33.5"x33.5"x33.5"	Ceramics	31 / 68

AUXILIARY TABLE



Balance table

Balance table is equipped with special mounted vibration-free plate for setting up analytical balance and other measuring equipment.

Table frame is reinforced fabricated frame with granite worktop for balance (depth - 60 mm) mounted on four dampers.

Balance tables can be completed with side tables. In this case balance table is inserted in side table.

Balance tables completed with side tables are intended for enlargement of working space of the table. It gives a possibility to place additional weighing equipment.

Either laminate or Labgrade can be used in production of side tables.

Side tables stand on adjustable feet and is fitted with a drawer.

Balance tables are supplied pre-assembled. Granite slab is packed separately. Side tables are supplied non-assembled.

PRODUCT CODE	ITEM AND DIMENSIONS (L X W X H)	WORKTOP MATERIAL	WEIGHT KG/LBS
56.0226.00.09-01	Balance table 630x450x750 mm / 24.8"x17.7"x29.5"	Granite	65 / 143
56.0226.03.09-01	Balance table 630x450x900 mm / 24.8"x17.7"x35.4"	Granite	69 / 152



AUXILIARY TABLE

Balance table

PRODUCT CODE	ITEM AND DIMENSIONS (L X W X H)	WORKTOP MATERIAL	WEIGHT KG/LBS
56.0369.00.09-01	Balance table with a drawer 630x450x750 mm / 24.8"x17.7"x29.5"	Granite	68/149
56.0369.03.09-01	Balance table with a drawer 630x450x900 mm / 24.8"x17.7"x35.4"	Granite	72/158

PRODUCT CODE	ITEM AND DIMENSIONS (L X W X H)	WORKTOP MATERIAL	WEIGHT KG/LBS
56.0498.00.04	Balance table with side table 1200x600x750 mm / 47.2"x23.6"x29.5"	Granite + white laminate	30+65/66+143
56.0498.00.14	Balance table with side table 1200x600x750 mm / 47.2"x23.6"x29.5"	Granite + gray laminate	30+65/66+143
56.0498.00.08	Balance table with side table 1200x600x750 mm / 47.2"x23.6"x29.5"	Granite + Labgrade	30+65/66+143



Hydrostatic weighing table

The table is intended for mounting of the equipment for hydrostatic weighing.

The table stands on adjustable feet for floor unevenness compensation.

PRODUCT CODE	ITEM AND DIMENSIONS (L X W X H)	WORKTOP MATERIAL	WEIGHT KG/LBS
56.0047.00.03	Hydrostatic weighing table 610x610x1200 mm / 24"x24"x47.2"	Ceramics	21 / 46



SHELVING

Shelving is intended for increasing of worktop area to place additional equipment.

Supplied non-assembled.

Bottom shelf can be optionally equipped with lighting unit and 2 sockets

Bench mounted shelving

PRODUCT CODE	ITEM AND DIMENSIONS (L X W X H)	WORKTOP MATERIAL	WEIGHT KG/LBS
56.0503.00.00	Bottom shelf 1500x250x450 mm / 59.1"x9.8"x17.7"	Steel	7 / 15
56.0504.00.00	Bottom shelf 1200x250x450 mm / 47.2"x9.8"x17.7"	Steel	6 / 13
56.0508.00.00	Upper shelf 1500x250x350 mm / 59.1"x9.8"x13.8"	Steel	7 / 15
56.0509.00.00	Upper shelf 1200x250x350 mm / 47.2"x9.8"x13.8"	Steel	6 / 13

Standard complete set:
Supplied non-assembled

Bench mounted shelving with 6 sockets

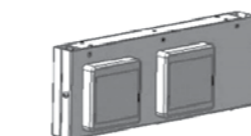
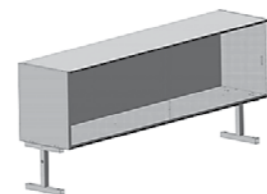
PRODUCT CODE	ITEM AND DIMENSIONS (L X W X H)	WORKTOP MATERIAL	WEIGHT KG/LBS
56.0505.00.00	Shelf with 6 sockets 1500x690 mm / 59.1"x27.2"	Steel	6 / 13
56.0506.00.00	Shelf with 6 sockets 1200x690 mm / 47.2"x27.2"	Steel	5 / 11

Bench mounted bookshelf

PRODUCT CODE	ITEM AND DIMENSIONS (L X W X H)	WORKTOP MATERIAL	WEIGHT KG/LBS
56.0130.01.00-01	Bookshelf 1200x340x400 mm / 47.2"x13.4"x15.7" (white)	Steel	29 / 63
56.0542.01.00-01	Bookshelf 1500x340x400 mm / 59.1"x13.4"x15.7" (white)	Steel	36 / 79

Panel

PRODUCT CODE	ITEM AND DIMENSIONS (L X W X H)	WORKTOP MATERIAL	WEIGHT KG/LBS
56.0513.00.00	Panel with sockets for bottom shelves (4 pcs) 300x66x110 mm / 11.8"x2.60"x4.33"	Steel	2 / 4



TITRATION BENCH

Titration bench is intended for operations connected with titration of solutions as well as making quantitative and qualitative analyses in chemical laboratories.

The unit consists of a bench and titration assembly.

Worktop is made of ceramic, Labgrade and epoxy composite DURCON.

1 big drawer/2 small drawers under worktop.

Upper part has 5 rods and 10 clamps for burettes.

Standard complete set:

4 luminescent lighting units; power switch; 2 splash-proof sockets; connector cord; switchboard equipment; 5 rods and 10 clamps.

Titration bench stands on adjustable feet. Supplied pre-assembled.



Polypropylene clamp holder for tubes

PRODUCT CODE	ITEM AND DIMENSIONS (L X W X H)	WORKTOP MATERIAL	WEIGHT KG/LBS
56.0534.10.08-01	Titration bench 1200x640x1830 mm / 47.2"x25.2"x72"	Labgrade	68 / 149
56.0534.10.02-01	Titration bench 1200x640x1830 mm / 47.2"x25.2"x72"	Durcon	74 / 163
56.0534.10.03-01	Titration bench 1210x640x1830 mm / 47.6"x25.2"x72"	Ceramic	72 / 158
56.0534.20.08-01	Titration bench 1200x640x1830 mm / 47.2"x25.2"x72" 2 drawers	Labgrade	78 / 171
56.0534.20.02-01	Titration bench 1200x640x1830 mm / 47.2"x25.2"x72" 2 drawers	Durcon	84 / 185
56.0534.20.03-01	Titration bench 1210x640x1830 mm / 47.6"x25.2"x72" 2 drawers	Ceramic	82 / 180
56.0534.30.08-01	Titration bench 1200x640x1830 mm / 47.2"x25.2"x72" 1 wide drawer	Labgrade	78 / 171
56.0534.30.02-01	Titration bench 1200x640x1830 mm / 47.2"x25.2"x72" 1 wide drawer	Durcon	84 / 185
56.0534.30.03-01	Titration bench 1210x640x1830 mm / 47.6"x25.2"x72" 1 wide drawer	Ceramic	82 / 180



LABORATORY CABINET WITH DRAWERS AND ELECTRICAL EQUIPMENT

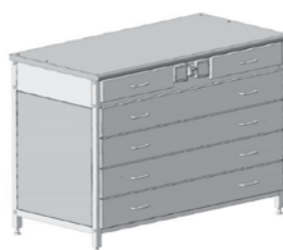


Laboratory cabinets are equipped with drawers, 2 sockets and electrical break automat 10A.

Mains cable is placed at the back of the cabinet. Robust reinforced fabricated frame stands on adjustable feet for floor unevenness compensation. Supplied pre-assembled.

Laboratory cabinet with electrical equipment and 2 drawers + 4 wide drawers

PRODUCT CODE	ITEM AND DIMENSIONS (L X W X H)	WORKTOP MATERIAL	WEIGHT KG/LBS
56.0488.00.04-01	Cabinet with electrical equipment 1200x600x850 mm / 47.2"x23.6"x33.5"	White laminate	87 / 191
56.0488.00.14-01	Cabinet with electrical equipment 1200x600x850 mm / 47.2"x23.6"x33.5"	Gray laminate	87 / 191
56.0488.00.08-01	Cabinet with electrical equipment 1200x600x850 mm / 47.2"x23.6"x33.5"	Labgrade	92 / 202
56.0488.00.18-01	Cabinet with electrical equipment 1210x610x850 mm / 47.6"x24"x33.5"	Labgrade-light	90 / 198
56.0488.00.02-01	Cabinet with electrical equipment 1200x600x850 mm / 47.2"x23.6"x33.5"	Durcon	97 / 213
56.0488.00.12-01	Cabinet with electrical equipment 1213x613x850 mm / 47.8"x24.1"x33.5" (with flange)	Durcon	99 / 218
56.0488.00.06-01	Cabinet with electrical equipment 1200x600x850 mm / 47.2"x23.6"x33.5"	Stainless steel	87 / 191
56.0488.00.13-01	Cabinet with electrical equipment 1210x610x850 mm / 47.6"x24"x33.5"	Ceramic granite	95 / 209
56.0488.00.03-01	Cabinet with electrical equipment 1210x610x850 mm / 47.6"x24"x33.5"	Ceramics	95 / 209



LABORATORY CABINET WITH 2 DRAWERS AND ELECTRICAL EQUIPMENT



Laboratory cabinet with electrical equipment and 2 drawers + 4 drawers + 4 drawers

PRODUCT CODE	ITEM AND DIMENSIONS (L X W X H)	WORKTOP MATERIAL	WEIGHT KG/LBS
56.0489.00.04-01	Cabinet with electrical equipment 1200x600x850 mm / 47.2"x23.6"x33.5"	White laminate	87 / 213
56.0489.00.14-01	Cabinet with electrical equipment 1200x600x850 mm / 47.2"x23.6"x33.5"	Gray laminate	87 / 213
56.0489.00.08-01	Cabinet with electrical equipment 1200x600x850 mm / 47.2"x23.6"x33.5"	Labgrade	102 / 224
56.0489.00.18-01	Cabinet with electrical equipment 1210x610x850 mm / 47.6"x24"x33.5"	Labgrade-light	100 / 220
56.0489.00.02-01	Cabinet with electrical equipment 1200x600x850 mm / 47.2"x23.6"x33.5"	Durcon	107 / 235
56.0489.00.12-01	Cabinet with electrical equipment 1213x613x850 mm / 47.8"x24.1"x33.5" (with flange)	Durcon	109 / 240
56.0489.00.06-01	Cabinet with electrical equipment 1200x600x850 mm / 47.2"x23.6"x33.5"	Stainless steel	97 / 213
56.0489.00.13-01	Cabinet with electrical equipment 1210x610x850 mm / 47.6"x24"x33.5"	Ceramic granite	105 / 231
56.0489.00.03-01	Cabinet with electrical equipment 1210x610x850 mm / 47.6"x24"x33.5"	Ceramics	105 / 231

Laboratory cabinet with electrical equipment and 2 drawers + 4 drawers + 1 small-sized drawer and 1 large-sized drawer

PRODUCT CODE	ITEM AND DIMENSIONS (L X W X H)	WORKTOP MATERIAL	WEIGHT KG/LBS
56.0489.10.04-01	Cabinet with electrical equipment 1200x600x850 mm / 47.2"x23.6"x33.5"	White laminate	94 / 207
56.0489.10.14-01	Cabinet with electrical equipment 1200x600x850 mm / 47.2"x23.6"x33.5"	Gray laminate	94 / 207
56.0489.10.08-01	Cabinet with electrical equipment 1200x600x850 mm / 47.2"x23.6"x33.5"	Labgrade	99 / 218
56.0489.10.18-01	Cabinet with electrical equipment 1210x610x850 mm / 47.6"x24"x33.5"	Labgrade-light	97 / 213
56.0489.10.02-01	Cabinet with electrical equipment 1200x600x850 mm / 47.2"x23.6"x33.5"	Durcon	104 / 229
56.0489.10.12-01	Cabinet with electrical equipment 1213x613x850 mm / 47.8"x24.1"x33.5" (with flange)	Durcon	106 / 233
56.0489.10.06-01	Cabinet with electrical equipment 1200x600x850 mm / 47.2"x23.6"x33.5"	Stainless steel	94 / 207
56.0489.10.13-01	Cabinet with electrical equipment 1210x610x850 mm / 47.6"x24"x33.5"	Ceramic granite	102 / 224
56.0489.10.03-01	Cabinet with electrical equipment 1210x610x850 mm / 47.6"x24"x33.5"	Ceramics	102 / 224

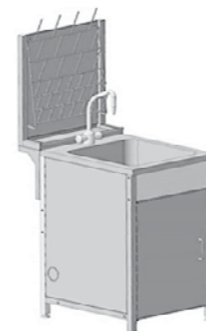


LABORATORY CABINET WITH DRAWERS AND ELECTRICAL EQUIPMENT



Laboratory cabinet with electrical equipment and 6 drawers

PRODUCT CODE	ITEM AND DIMENSIONS (L X W X H)	WORKTOP MATERIAL	WEIGHT KG/LBS
56.0489.20.04-01	Cabinet with electrical equipment 1200x600x850 mm / 47.2"x23.6"x33.5"	White laminate	91 / 200
56.0489.20.14-01	Cabinet with electrical equipment 1200x600x850 mm / 47.2"x23.6"x33.5"	Gray laminate	91 / 200
56.0489.20.08-01	Cabinet with electrical equipment 1200x600x850 mm / 47.2"x23.6"x33.5"	Labgrade	96 / 211
56.0489.20.18-01	Cabinet with electrical equipment 1210x610x850 mm / 47.6"x24"x33.5"	Labgrade-light	94 / 207
56.0489.20.02-01	Cabinet with electrical equipment 1200x600x850 mm / 47.2"x23.6"x33.5"	Durcon	101 / 222
56.0489.20.12-01	Cabinet with electrical equipment 1213x613x850 mm / 47.8"x24.1"x33.5" (with flange)	Durcon	103 / 227
56.0489.20.06-01	Cabinet with electrical equipment 1200x600x850 mm / 47.2"x23.6"x33.5"	Stainless steel	91 / 200
56.0489.20.13-01	Cabinet with electrical equipment 1210x610x850 mm / 47.6"x24"x33.5"	Ceramic granite	99 / 218
56.0489.20.03-01	Cabinet with electrical equipment 1210x610x850 mm / 47.6"x24"x33.5"	Ceramics	99 / 218



LABORATORY SINK BENCH

Laboratory sink bench is intended for labware washing and disposal of chemicals in chemical laboratories. The sink bench is a metal welded construction with epoxy-polyester powder paint coating.

The sink bench is fitted with bottom cabinet with hinged door. It is can optionally be completed with drying rack.

The sink can be made of stainless steel, fiber-reinforced plastic and epoxy composite DURCON.

For the laboratories where corrosive liquids are used, TOF mixer tap can be supplied with sink benches if requested.

Sinks made of composite of epoxide resin can be used with corrosive liquids and at high temperatures.

Sinks made of stainless steel is not recommended to use when working with strong acid and salt acid.



Laboratory sink bench 500×600×850

PRODUCT CODE	ITEM AND DIMENSIONS (L X W X H)	WORKTOP MATERIAL	WEIGHT KG/LBS
56.0532.00.06-01	Sink bench 500x600x850 mm / 19.7"x23.6"x33.5"	Stainless steel	20 / 44
56.0532.00.01-01	Sink bench 550x650x850 mm / 21.7"x25.6"x33.5"	Fiber-reinforced plastic	26 / 57
56.0532.00.02-01 T	Sink bench 550x650x850 mm / 21.7"x25.6"x33.5" mixer tap TOF	Durcon	41 / 90

Laboratory sink bench with drying rack 500×750×1400

PRODUCT CODE	ITEM AND DIMENSIONS (L X W X H)	WORKTOP MATERIAL	WEIGHT KG/LBS
56.0532.10.06-01	Sink bench with drying rack 500x740x1400 mm / 19.7"x29.1"x55.1"	Stainless steel	27 / 59
56.0532.10.01-01	Sink bench with drying rack 550x790x1400 mm / 21.7"x31.1"x55.1"	Fiber-reinforced plastic	33 / 72
56.0532.10.02-01 T	Sink bench with drying rack 550x790x1400 mm / 21.7"x31.1"x55.1" mixer tap TOF	Durcon	48 / 105

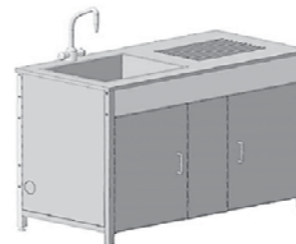


LABORATORY SINK BENCH



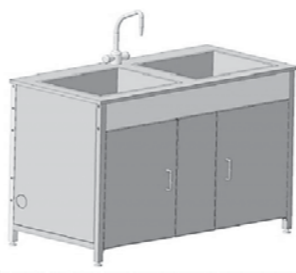
Sink bench (2 sinks)

PRODUCT CODE	ITEM AND DIMENSIONS (L X W X H)	WORKTOP MATERIAL	WEIGHT KG/LBS
56.0406.00.06-01	Sink bench 800x600x850 mm / 31.5"x23.6"x33.5" with 2 sinks, mixer tap	Stainless steel	45 / 99



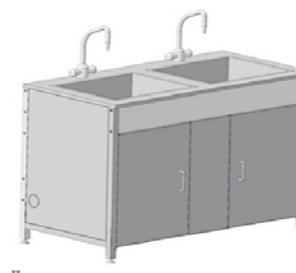
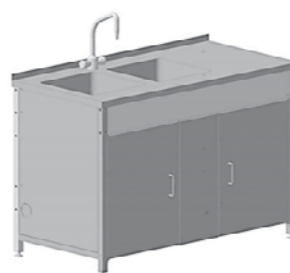
Sink bench

PRODUCT CODE	ITEM AND DIMENSIONS (L X W X H)	WORKTOP MATERIAL	WEIGHT KG/LBS
56.0533.00.06-01	Sink bench 1200x600x850 mm / 47.2"x23.6"x33.5" (right side sink)	Stainless steel	58 / 127
56.0533.01.06-01	Sink bench 1200x600x850 mm / 47.2"x23.6"x33.5" (left side sink)	Stainless steel	58 / 127



Sink bench (2 sinks)

PRODUCT CODE	ITEM AND DIMENSIONS (L X W X H)	WORKTOP MATERIAL	WEIGHT KG/LBS
56.0533.10.06-01	Sink bench 1200x600x850 mm / 47.2"x23.6"x33.5" (left side sinks)	Stainless steel	58 / 127
56.0533.11.06-01	Sink bench 1200x600x850 mm / 47.2"x23.6"x33.5" (right side sinks)	Stainless steel	58 / 127



LABORATORY SINK BENCH



Sink bench (1 sink)

PRODUCT CODE	ITEM AND DIMENSIONS (L X W X H)	WORKTOP MATERIAL	WEIGHT KG/LBS
56.0533.00.01-01	Sink bench 1200x600x850 mm / 47.2"x23.6"x33.5" (left side sink)	Fiber-reinforced plastic	58 / 127
56.0533.01.01-01	Sink bench 1200x600x850 mm / 47.2"x23.6"x33.5" (right side sink)	Fiber-reinforced plastic	58 / 127
56.0533.00.02-01 T	Sink bench 1200x600x850 mm / 47.2"x23.6"x33.5" (with 1 sink, mixer tap TOF)	Durcon	100 / 220

Sink bench with 2 sinks and mixer tap

PRODUCT CODE	ITEM AND DIMENSIONS (L X W X H)	WORKTOP MATERIAL	WEIGHT KG/LBS
56.0533.10.02-01 T	Double sink bench 1200x600x850 mm / 47.2"x23.6"x33.5" 2 sinks, mixer tap TOF	Durcon	120 / 264
56.0533.10.01-01	Double sink bench 1200x600x850 mm / 47.2"x23.6"x33.5"	Fiber-reinforced plastic	58 / 127

Sink bench with 2 sinks and 2 mixer taps

PRODUCT CODE	ITEM AND DIMENSIONS (L X W X H)	WORKTOP MATERIAL	WEIGHT KG/LBS
56.0533.11.02-01 T	Double sink bench 1200x600x850 mm / 47.2"x23.6"x33.5"	Durcon	120 / 264
56.0533.11.01-01	Double sink bench 1200x600x850 mm / 47.2"x23.6"x33.5"	Fiber-reinforced plastic	58 / 127



FUME CUPBOARD



Fume cupboard is intended for safe working with volatile hazardous substances by exhaust of fumes, heavy gases, particle of liquids, etc.

Fume cupboard is fitted with lift impact-resistant shield (triplex glass).

Maximum lift height of the shield - 650 mm.

Fume cupboard stands on adjustable rests.



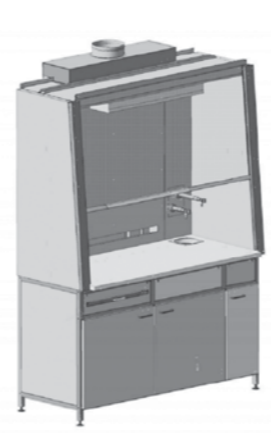
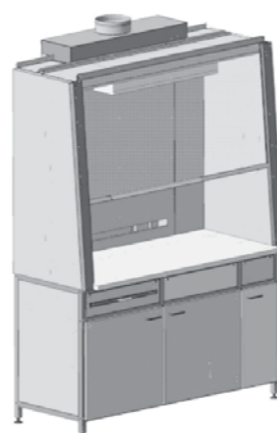
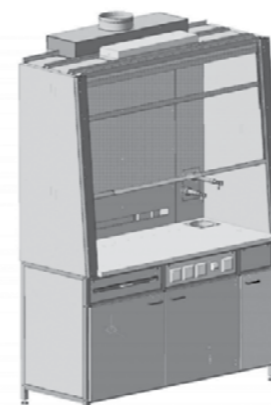
Explosion-proof lighting unit

Fume cupboard with electrical equipment

PRODUCT CODE	ITEM AND DIMENSIONS (L X W X H)	WORKTOP MATERIAL	WEIGHT KG/LBS
56.0500.02.03-01	Fume cupboard 1520x750x2190 mm / 59.8"x29.5"x86.2"	Ceramics	350 / 771
56.0500.00.02-01	Fume cupboard 1520x750x2190 mm / 59.8"x29.5"x86.2"	DURCON	355 / 782
56.0500.01.08-01	Fume cupboard 1520x750x2190 mm / 59.8"x29.5"x86.2"	Labgrade	350 / 771
56.0500.03.06-01	Fume cupboard 1520x750x2190 mm / 59.8"x29.5"x86.2"	Stainless steel	345 / 760

Fume cupboard with explosion-proof electrical equipment

PRODUCT CODE	ITEM AND DIMENSIONS (L X W X H)	WORKTOP MATERIAL	WEIGHT KG/LBS
56.0500.09.03-01	Fume cupboard 1520x750x2190 mm / 59.8"x29.5"x86.2"	Ceramics	350 / 771
56.0500.11.02-01	Fume cupboard 1520x750x2190 mm / 59.8"x29.5"x86.2"	DURCON	355 / 782
56.0500.08.08-01	Fume cupboard 1520x750x2190 mm / 59.8"x29.5"x86.2"	Labgrade	350 / 771
56.0500.10.06-01	Fume cupboard 1520x750x2190 mm / 59.8"x29.5"x86.2"	Stainless steel	345 / 760



FUME CUPBOARD WITH WATER INLET

Fume cupboard is intended for safe working with volatile hazardous substances by exhaust of fumes, heavy gases, particle of liquids, etc.

Fume cupboard is fitted with lift impact-resistant shield (triplex glass).

Maximum lift height of the shield - 675 mm.

Fume cupboard stands on adjustable rests.



Fume cupboard with water inlet and electrical equipment

PRODUCT CODE	ITEM AND DIMENSIONS (L X W X H)	WORKTOP MATERIAL	WEIGHT KG/LBS
56.0500.05.03-01	Fume cupboard 1520x750x2190 mm / 59.8"x29.5"x86.2"	Ceramics	350 / 771
56.0500.04.02-01 T	Fume cupboard 1520x750x2190 mm / 59.8"x29.5"x86.2" (tap TOF)	DURCON	355 / 782
56.0500.06.08-01	Fume cupboard 1520x750x2190 mm / 59.8"x29.5"x86.2"	Labgrade	350 / 771
56.0500.07.06-01	Fume cupboard 1520x750x2190 mm / 59.8"x29.5"x86.2"	Stainless steel	345 / 760

Fume cupboard with water inlet and explosion-proof electrical equipment

PRODUCT CODE	ITEM AND DIMENSIONS (L X W X H)	WORKTOP MATERIAL	WEIGHT KG/LBS
56.0500.14.03-01	Fume cupboard 1520x750x2190 mm / 59.8"x29.5"x86.2"	Ceramics	350 / 771
56.0500.13.02-01 T	Fume cupboard 1520x750x2190 mm / 59.8"x29.5"x86.2" (tap TOF)	DURCON	355 / 782
56.0500.15.08-01	Fume cupboard 1520x750x2190 mm / 59.8"x29.5"x86.2"	Labgrade	350 / 771
56.0500.12.06-01	Fume cupboard 1520x750x2190 mm / 59.8"x29.5"x86.2"	Stainless steel	345 / 760



FUME CUPBOARD WITH SINK



Fume cupboard is intended for safe working with volatile hazardous substances by exhaust of fumes, heavy gases, particle of liquids, etc.
Fume cupboard is fitted with lift impact-resistant shield (triplex glass).
Maximum lift height of the shield - 675 mm.
Fume cupboard stands on adjustable rests.

Fume cupboard with 1 sink

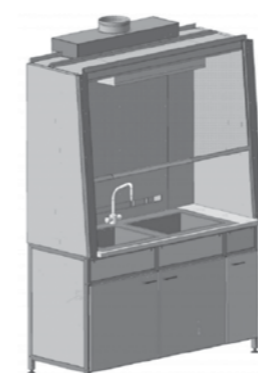
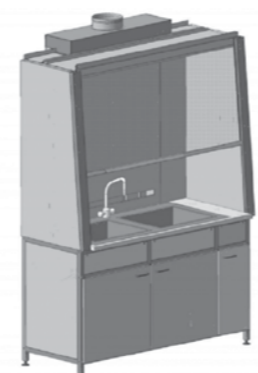
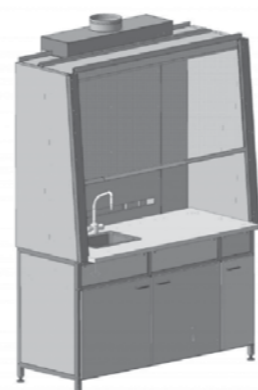
PRODUCT CODE	ITEM AND DIMENSIONS (L X W X H)	WORKTOP MATERIAL	WEIGHT KG/LBS
56.0500.23.06-01	Fume cupboard 1520x750x2190 mm / 59.8"x29.5"x86.2"	Stainless steel	350 / 771
56.0500.22.02-01 T	Fume cupboard 1520x750x2190 mm / 59.8"x29.5"x86.2"	DURCON	355 / 782

No electrical equipment in fume cupboard with sink.
Fume cupboard with explosion-proof electrical equipment has a flameproof lighting unit inside of chamber.

Fume cupboard with double sink

PRODUCT CODE	ITEM AND DIMENSIONS (L X W X H)	WORKTOP MATERIAL	WEIGHT KG/LBS
56.0500.21.06-01	Fume cupboard with double sink 1520x750x2190 mm / 59.8"x29.5"x86.2"	Stainless steel	345 / 760
56.0500.20.02-01 T	Fume cupboard with double sink 1520x750x2190 mm / 59.8"x29.5"x86.2" mixer tap TOF	DURCON	355 / 782

No electrical equipment in fume cupboard with sink.
Fume cupboard with explosion-proof electrical equipment has a flameproof lighting unit inside of chamber.



FUME CUPBOARD WITH SINK



Fume cupboard with one sink and explosion-proof electrical equipment

PRODUCT CODE	ITEM AND DIMENSIONS (L X W X H)	WORKTOP MATERIAL	WEIGHT KG/LBS
56.0500.18.02-01 T	Fume cupboard 1520x750x2190 mm / 59.8"x29.5"x86.2" mixer tap TOF	DURCON	355 / 782
56.0500.19.06-01	Fume cupboard 1520x750x2190 mm / 59.8"x29.5"x86.2"	Stainless steel	345 / 760

No electrical equipment in fume cupboard with sink.
Fume cupboard with explosion-proof electrical equipment has a flameproof lighting unit inside of chamber.

Fume cupboard with double sink and explosion-proof electrical equipment

PRODUCT CODE	ITEM AND DIMENSIONS (L X W X H)	WORKTOP MATERIAL	WEIGHT KG/LBS
56.0500 17 02-01 T	Fume cupboard 1520x750x2190 mm / 59.8"x29.5"x86.2" mixer tap TOF	DURCON	355 / 782
56.0500 16 06-01	Fume cupboard 1520x750x2190 mm / 59.8"x29.5"x86.2"	Stainless steel	345 / 760

No electrical equipment in fume cupboard with sink.
Fume cupboard with explosion-proof electrical equipment has a flameproof lighting unit inside of chamber.



Laboratory furniture PRAKTIKA

General-purpose PRAKTIKA laboratory furniture made of metal ensures its robustness, stability and durability.

Robust metal constructions from square tube and rectangular tube (30x60x2.0 mm and 30x30x1.2 mm) allows loading up to 200-300 kg.

Frame assembly is covered with paint RAL7035 with powder coating.

PRAKTIKA laboratory furniture allows choosing different worktop materials for any types of laboratories.

Contents

Laboratory wall bench	30
Shelving for wall bench	32
Laboratory island workbench	33
Shelving for island workbench.....	35
Laboratory cabinets	36
Laboratory sink bench	37
Titration bench.....	38
Balance table.....	38
Fume cupboard	40
Fume cupboard with lighting unit.....	41



LABORATORY WALL BENCH



Wall bench can be completed with top-mounted and mobile cabinets, shelves, electrical equipment, water inlet and gas inlet upon request.

Height (for sedentary work) - 750 mm.

Height (for standing activities) - 900 mm.

Worktop width - 750 mm.

The worktop can be loaded with up to 300 kg.
Supplied non-assembled.

Wall bench

PRODUCT CODE	ITEM AND DIMENSIONS (L X W X H)	WORKTOP MATERIAL	WEIGHT KG/LBS
56.0396.01.14	Wall bench 960x750x750 mm / 37.8"x29.5"x29.5"	Laminate	27 / 59
56.0396.01.03	Wall bench 915x750x750 mm / 36"x29.5"x29.5"	Ceramics	36 / 79
56.0396.01.08	Wall bench 960x750x750 mm / 37.8"x29.5"x29.5"	Labgrade	33 / 72
56.0396.11.14	Wall bench 960x750x900 mm / 37.8"x29.5"x35.4"	Laminate	28 / 61
56.0396.11.03	Wall bench 915x750x900 mm / 36"x29.5"x35.4"	Ceramics	37 / 81
56.0396.11.08	Wall bench 960x750x900 mm / 37.8"x29.5"x35.4"	Labgrade	34 / 74
56.0301.01.14	Wall bench 1200x750x750 mm / 47.2"x29.5"x29.5"	Laminate	34 / 74
56.0301.01.03	Wall bench 1210x750x750 mm / 47.6"x29.5"x29.5"	Ceramics	46 / 101
56.0301.01.08	Wall bench 1200x750x750 mm / 47.2"x29.5"x29.5"	Labgrade	39 / 85
56.0301.01.02	Wall bench 1200x750x750 mm / 47.2"x29.5"x29.5"	Durcon	50 / 110
56.0301.01.12	Wall bench 1213x763x750 mm / 47.8"x30"x29.5" (with flange)	Durcon	50 / 112
56.0301.11.14	Wall bench 1200x750x900 mm / 47.2"x29.5"x35.4"	Laminate	35 / 77
56.0301.11.03	Wall bench 1210x750x900 mm / 47.6"x29.5"x35.4"	Ceramics	47 / 103
56.0301.11.08	Wall bench 1200x750x900 mm / 47.2"x29.5"x35.4"	Labgrade	40 / 88
56.0301.11.02	Wall bench 1200x750x900 mm / 47.2"x29.5"x35.4"	Durcon	51 / 112
56.0301.11.12	Wall bench 1213x763x900 mm / 47.8"x30"x35.4" (with flange)	Durcon	52 / 114



LABORATORY WALL BENCH



× - tap TOF - installed optionally
T - tap TOF

Wall bench

PRODUCT CODE	ITEM AND DIMENSIONS (L X W X H)	WORKTOP MATERIAL	WEIGHT KG/LBS
56.0255.01.14	Wall bench 1500x750x750 mm / 59.1"x29.5"x29.5"	Laminate	38 / 83
56.0255.01.03	Wall bench 1515x750x750 mm / 59.6"x29.5"x29.5"	Ceramics	53 / 116
56.0255.01.08	Wall bench 1500x750x750 mm / 59.1"x29.5"x29.5"	Labgrade	47 / 103
56.0255.01.02	Wall bench 1500x750x750 mm / 59.1"x29.5"x29.5"	Durcon	56 / 123
56.0255.01.12	Wall bench 1513x763x750 mm / 59.6"x30"x29.5" (with flange)	Durcon	57 / 125
56.0255.11.04	Wall bench 1500x750x900 mm / 59.1"x29.5"x35.4"	Laminate	39 / 85
56.0255.11.03	Wall bench 1515x750x900 mm / 59.6"x29.5"x35.4"	Ceramics	54 / 119
56.0255.11.08	Wall bench 1500x750x900 mm / 59.1"x29.5"x35.4"	Labgrade	48 / 105
56.0255.11.02	Wall bench 1500x750x900 mm / 59.1"x29.5"x35.4"	Durcon	57 / 125
56.0255.11.12	Wall bench 1513x763x750 mm / 59.6"x30"x29.5" (with flange)	Durcon	58 / 127
56.0301.12.03×	Wall bench with water inlet 1210x750x900 mm / 47.6"x29.5"x35.4"	Ceramics	50 / 110
56.0301.12.08×	Wall bench with water inlet 1200x750x900 mm / 47.2"x29.5"x35.4"	Labgrade	43 / 94
56.0301.12.02T	Wall bench with water inlet 1200x750x900 mm / 47.2"x29.5"x35.4"	Durcon	53 / 116
56.0301.12.12T	Wall bench with water inlet 1213x763x900 mm / 47.8"x29.5"x35.4" (with flange)	Durcon	54 / 119
56.0255.12.03×	Wall bench with water inlet 1515x750x900 mm / 59.6"x29.5"x35.4"	Ceramics	57 / 125
56.0255.12.08×	Wall bench with water inlet 1500x750x900 mm / 59.1"x29.5"x35.4"	Labgrade	51 / 112
56.0255.12.02T	Wall bench with water inlet 1500x750x900 mm / 59.1"x29.5"x35.4"	Durcon	60 / 132
56.0255.12.12T	Wall bench with water inlet 1513x763x900 mm / 59.6"x30"x35.4" (with flange)	Durcon	61 / 134



SHELVING FOR WALL BENCH

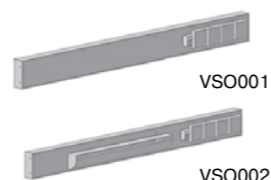
Bottom shelves can be completed with electrical equipment and lighting unit.

Supplied non-assembled.

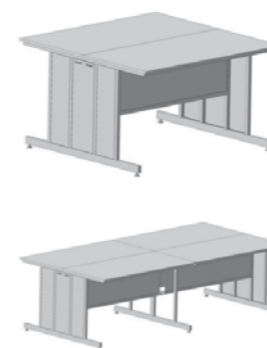


Shelving for wall bench

PRODUCT CODE	ITEM AND DIMENSIONS (L X W X H)	WORKTOP MATERIAL	WEIGHT KG/LBS
Bottom shelf for wall bench			
56.0295.11.14	Bottom shelf 1200x310x460 mm / 47.2"x12.2"x18.1"	Laminate	11 / 24
56.0295.11.08	Bottom shelf 1200x310x460 mm / 47.2"x12.2"x18.1"	Labgrade	17 / 52
56.0295.01.14	Bottom shelf 1500x310x460 mm / 59.1"x12.2"x18.1"	Laminate	12 / 26
56.0295.01.08	Bottom shelf 1500x310x460 mm / 59.1"x12.2"x18.1"	Labgrade	19 / 41
2-level shelf for wall bench			
56.0311.11.14	2-level shelf for wall bench 1200x450x850 mm / 47.2"x17.7"x33.5"	Laminate	24 / 52
56.0311.11.08	2-level shelf for wall bench 1200x450x850 mm / 47.2"x17.7"x33.5"	Labgrade	32 / 70
56.0311.01.14	2-level shelf for wall bench 1500x450x850 mm / 59.1"x17.7"x33.5"	Laminate	27 / 59
56.0311.01.08	2-level shelf for wall bench 1500x450x850 mm / 59.1"x17.7"x33.5"	Labgrade	43 / 94
Electrical equipment, water inlet for wall bench			
VSO001	Electric break automat, 4 outlets		
VSO002	Electrical break automat, 4 outlets, lighting unit 18W		



* Shelf can be optionally completed with electrical equipment VSO001 or VSO002



LABORATORY ISLAND TABLE

Island table is used as supporting construction for laboratory equipment and instruments.

Island table is placed in the middle of the room for all-sided access.

Island table can be completed with top-mounted and mobile cabinets, shelves, electrical equipment, water inlet and gas inlet upon request. If the table is fitted with water inlet, it is completed with drain sink and cold-water tap.

Height (for sedentary work) - 75 cm.

Height (for standing work) - 90 cm.

Table worktop can be loaded with up to 300 kg.

Table stands on adjustable feet for floor unevenness compensation.

Island table

PRODUCT CODE	ITEM AND DIMENSIONS (L X W X H)	WORKTOP MATERIAL	WEIGHT KG/LBS
56.0388.12.14	Island table 1200x1500x900 mm / 47.2"x59.1"x35.4"	Laminate	56 / 123
56.0388.12.03	Island table 1210x1500x900 mm / 47.6"x59.1"x35.4"	Ceramics	98 / 216
56.0388.12.08	Island table 1200x1500x900 mm / 47.2"x59.1"x35.4"	Labgrade	84 / 185
56.0388.12.02	Island table 1200x1500x900 mm / 47.2"x59.1"x35.4"	Durcon	102 / 224
56.0388.12.12	Island table 1213x1513x900 mm / 47.8"x59.6"x35.4" (with flange)	Durcon	104 / 229
56.0388.22.14	Island table 1500x1500x900 mm / 59.1"x59.1"x35.4"	Laminate	82 / 180
56.0388.22.03	Island table 1515x1500x900 mm / 59.6"x59.1"x35.4"	Ceramics	112 / 246
56.0388.22.08	Island table 1500x1500x900 mm / 59.1"x59.1"x35.4"	Labgrade	100 / 220
56.0388.22.02	Island table 1500x1500x900 mm / 59.1"x59.1"x35.4"	Durcon	116 / 255
56.0388.22.12	Island table 1513x1513x900 mm / 59.6"x59.6"x35.4" (with flange)	Durcon	118 / 260
56.0389.12.14	Island table 2400x1500x900 mm / 94.5"x59.1"x35.4"	Laminate	94 / 207
56.0389.12.03	Island table 2420x1500x900 mm / 95.3"x59.1"x35.4"	Ceramics	178 / 392
56.0389.12.08	Island table 2400x1500x900 mm / 94.5"x59.1"x35.4"	Labgrade	150 / 330
56.0389.12.02	Island table 2400x1500x900 mm / 94.5"x59.1"x35.4"	Durcon	186 / 410
56.0389.12.12	Island table 2413x1513x900 mm / 95"x59.6"x35.4" (with flange)	Durcon	190 / 418
56.0389.22.14	Island table 3000x1500x900 mm / 118"x59.1"x35.4"	Laminate	146 / 321
56.0389.22.03	Island table 3030x1500x900 mm / 119"x59.1"x35.4"	Ceramics	206 / 454
56.0389.22.08	Island table 3000x1500x900 mm / 118"x59.1"x35.4"	Labgrade	182 / 401
56.0389.22.02	Island table 3000x1500x900 mm / 118"x59.1"x35.4"	Durcon	214 / 471
56.0389.22.12	Island table 3013x1513x900 mm / 119"x59.6"x35.4" (with flange)	Durcon	218 / 480

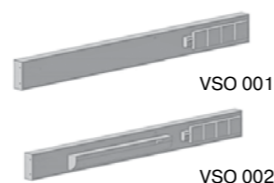


LABORATORY ISLAND TABLE

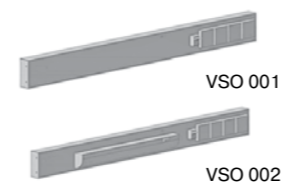
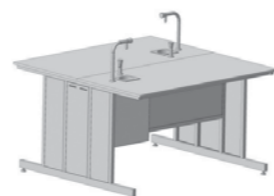
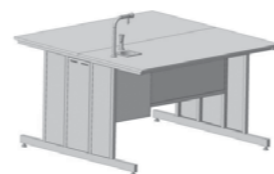


Island table

PRODUCT CODE	ITEM AND DIMENSIONS (L X W X H)	WORKTOP MATERIAL	WEIGHT KG/LBS
Island table with water inter (1 tap)			
56.0394.11.03	Island table 1210x1500x900 mm / 47.6"x59.1"x35.4"	Ceramics	104 / 229
56.0394.11.08	Island table 1200x1500x900 mm / 47.2"x59.1"x35.4"	Labgrade	90 / 198
56.0394.11.02T	Island table 1200x1500x900 mm / 47.2"x59.1"x35.4" (tap TOF)	Durcon	108 / 238
56.0394.11.12T	Island table 1213x1513x900 mm / 47.8"x59.6"x35.4" (with flange)	Durcon	110 / 242
Island table with water inter (1 tap)			
56.0394.21.03	Island table 1515x1500x900 mm / 59.6"x59.1"x35.4"	Ceramics	118 / 260
56.0394.21.08	Island table 1500x1500x900 mm / 59.1"x59.1"x35.4"	Labgrade	106 / 233
56.0394.21.02T	Island table 1500x1500x900 mm / 59.1"x59.1"x35.4" (tap TOF)	Durcon	122 / 268
56.0394.21.12T	Island table 1513x1513x900 mm / 59.6"x59.6"x35.4" (with flange, tap TOF)	Durcon	125 / 275
Island table with water inlet (2 taps)			
56.0394.12.03	Island table 1210x1500x900 mm / 47.6"x59.1"x35.4"	Ceramics	110 / 242
56.0394.12.08	Island table 1200x1500x900 mm / 47.2"x59.1"x35.4"	Labgrade	96 / 211
56.0394.12.02T	Island table 1200x1500x900 mm / 47.2"x59.1"x35.4" (tap TOF)	Durcon	114 / 251
56.0394.12.12T	Island table 1213x1513x900 mm / 47.8"x59.6"x35.4" (with flange, tap TOF)	Durcon	116 / 255
Island table with water inlet (2 taps)			
56.0394.22.03	Island table 1515x1500x900 mm / 59.6"x59.1"x35.4"	Ceramics	124 / 273
56.0394.22.08	Island table 1500x1500x900 mm / 59.1"x59.1"x35.4"	Labgrade	112 / 246
56.0394.22.02T	Island table 1500x1500x900 mm / 59.1"x59.1"x35.4" (tap TOF)	Durcon	128 / 282
56.0394.22.12T	Island table 1513x1513x900 mm / 59.6"x59.6"x35.4" (with flange, tap TOF)	Durcon	131 / 288



* Shelf can be optionally completed with electrical equipment VSO001 or VSO002



* Shelf can be optionally completed with electrical equipment VSO001 or VSO002



SHELVING FOR LABORATORY ISLAND TABLE

Shelving is intended for worktop enlargement of island table.

Bottom shelves can be optionally completed with electrical equipment and lighting unit.



Shelving for island table

PRODUCT CODE	ITEM AND DIMENSIONS (L X W X H)	WORKTOP MATERIAL	WEIGHT KG/LBS
Bottom shelf for island table			
56.0390.11.14	Bottom shelf 1200x360x460 mm / 47.2"x14.2"x18.1"	Laminate	15 / 33
56.0390.11.08	Bottom shelf 1200x360x460 mm / 47.2"x14.2"x18.1"	Labgrade	21 / 46
56.0390.01.14	Bottom shelf 1500x360x460 mm / 59.1"x14.2"x18.1"	Laminate	16 / 35
56.0390.01.08	Bottom shelf 1500x360x460 mm / 59.1"x14.2"x18.1"	Labgrade	23 / 50
2-level shelf for island table			
56.0391.11.14	2-level shelf 1200x450x850 mm / 47.2"x17.7"x33.5"	Laminate	28 / 61
56.0391.11.08	2-level shelf 1200x450x850 mm / 47.2"x17.7"x33.5"	Labgrade	36 / 79
56.0391.01.14	2-level shelf 1500x450x850 mm / 59.1"x17.7"x33.5"	Laminate	31 / 68
56.0391.01.08	2-level shelf 1500x450x850 mm / 59.1"x17.7"x33.5"	Labgrade	47 / 103
Double bottom shelf			
56.0390.12.14	Double bottom shelf 2400x360x460 mm / 94.5"x14.2"x18.1"	Laminate	30 / 66
56.0390.12.08	Double bottom shelf 2400x360x460 mm / 94.5"x14.2"x18.1"	Labgrade	42 / 92
56.0390.02.14	Double bottom shelf 3000x360x460 mm / 118"x14.2"x18.1"	Laminate	32 / 70
56.0390.02.08	Double bottom shelf 3000x360x460 mm / 118"x14.2"x18.1"	Labgrade	46 / 101
2-level double shelf for island table			
56.0391.12.14	2-level double shelf 2400x450x850 mm / 94.5"x17.7"x33.5"	Laminate	58 / 124
56.0391.12.08	2-level double shelf 2400x450x850 mm / 94.5"x17.7"x33.5"	Labgrade	72 / 158
56.0391.02.14	2-level double shelf 3000x450x850 mm / 118"x17.7"x33.5"	Laminate	62 / 136
56.0391.02.08	2-level double shelf 3000x450x850 mm / 118"x17.7"x33.5"	Labgrade	94 / 207
Electrical equipment for bottom shelf			
VSO 001 - 1200	Electrical break automat, 4 outlets		
VSO 002 - 1200	Electrical break automat, 4 outlets, lighting unit 18W		
VSO 001 - 1500	Electrical break automat, 4 outlets		
VSO 002 - 1500	Electrical break automat, 4 outlets, lighting unit 18W		



LABORATORY CABINETS

Laboratory cabinets are intended to complete all models of work, wall and island benches.



Cabinet

PRODUCT CODE	ITEM AND DIMENSIONS (L X W X H)	WORKTOP MATERIAL	WEIGHT KG/LBS
Top-mounted cabinet for wall and island benches			
56.0300.01.00-01	Top-mounted cabinet (3 drawers), 400x530x380 mm / 15.7"x20.9"x15" (1 lockable door)		19 / 41
56.0315.01.00-01	Top-mounted cabinet (4 drawers), 400x530x492 mm / 15.7"x20.9"x19.4" (1 lockable door)		23 / 50
56.0415.01.00-01	Top-mounted cabinet (right side door), 400x530x492 mm / 15.7"x20.9"x19.4" (lock and removable shelf)		17 / 37
56.0404.01.00-01	Top-mounted cabinet (left side door), 400x530x492 mm / 15.7"x20.9"x19.4" (lock and removable shelf)		17 / 37
Mobile cabinet for wall and island benches			
56.0491.50.10-01	Mobile cabinet (5 drawers) 460x530x640 mm / 18.1"x20.9"x25.2"		34 / 74
56.0491.30.10-01	Mobile cabinet (3 drawers) 460x530x640 mm / 18.1"x20.9"x25.2"		31 / 68
56.0507.00.10-01	Mobile cabinet (2 drawers) 460x530x640 mm / 18.1"x20.9"x25.2"		27 / 59
56.0491.00.10-01	Mobile cabinet (right side door) 460x530x640 mm / 18.1"x20.9"x25.2"		24 / 52
56.0491.10.10-01	Mobile cabinet (left side door) 460x530x640 mm / 18.1"x20.9"x25.2"		24 / 52
Cabinet for wall and island benches			
56.0519.11.04-01	Cabinet 610x450x1060 mm / 24"x17.7"x41.7"	White laminate	32 / 70
56.0519.11.14-01	Cabinet 610x450x1060 mm / 24"x17.7"x41.7"	Gray laminate	32 / 70
56.0518.11.04-01	Cabinet (2 doors) 910x450x1060 mm / 35.8"x17.7"x41.7"	White laminate	42 / 92
56.0518.11.14-01	Cabinet (2 doors) 910x450x1060 mm / 35.8"x17.7"x41.7"	Gray laminate	42 / 92
56.0548.11.04-01	Cabinet (2 doors) 910x600x1060 mm / 35.8"x23.6"x41.7"	White laminate	48 / 105
56.0548.11.14-01	Cabinet (2 doors) 910x600x1060 mm / 35.8"x23.6"x41.7"	Gray laminate	48 / 105



LABORATORY SINK

Sink is used for labware washing, cleaning operating equipment and disposal of chemicals in laboratories.

Sink is a metal welded construction equipped with hinged door cabinets. It can be completed either with drying rack or without it.



Sink

PRODUCT CODE	ITEM AND DIMENSIONS (L X W X H)	WORKTOP MATERIAL	WEIGHT KG/LBS
56.0367.01.06-01	Single sink 500x750x900 mm / 19.7"x29.5"x35.4"	Stainless steel 14 cm	31 / 68
56.0367.02.06-01	Single sink with drying rack 500x750x1450 mm / 19.7"x29.5"x57.1"	Stainless steel 14 cm	36 / 79
56.0368.01.05-01	Single sink 550x775x900 mm / 21.7"x30.5"x35.4"	Fiber-reinforced plastic	36 / 79
56.0368.02.05-01	Single sink with drying rack 550x775x1450 mm / 21.7"x30.5"x57.1"	Fiber-reinforced plastic	41 / 90
56.0368.01.02-01T	Single sink 550x775x900 mm / 21.7"x30.5"x35.4" mixer tap TOF	Durcon	51 / 112
56.0368.02.02-01T	Single sink with drying rack 550x775x1450 mm / 21.7"x30.5"x57.1" mixer tap TOF	Durcon	56 / 123
56.0347.01.06-01	Double sink 1200x750x900 mm / 47.2"x29.5"x35.4"	Stainless steel 14 cm	69 / 152
56.0347.02.06-01	Double sink (left side drying rack) 1200x750x1450 mm / 47.2"x29.5"x57.1"	Stainless steel 14 cm	64 / 141
56.0347.03.06-01	Double sink (right side drying rack) 1200x750x1450 mm / 47.2"x29.5"x57.1"	Stainless steel 14 cm	64 / 141
56.0347.04.06-01	Double sink (2 drying racks) 1200x750x1450 mm / 47.2"x29.5"x57.1"	Stainless steel 14 cm	69 / 152
56.0347.01.05-01	Double sink 1200x750x900 mm / 47.2"x29.5"x35.4"	Fiber-reinforced plastic 28 cm	61 / 134
56.0347.02.05-01	Double sink (left side drying rack) 1200x750x1450 mm / 47.2"x29.5"x57.1"	Fiber-reinforced plastic 28 cm	66 / 145
56.0347.03.05-01	Double sink (right side drying rack) 1200x750x1450 mm / 47.2"x29.5"x57.1"	Fiber-reinforced plastic 28 cm	66 / 145
56.0347.04.05-01	Double sink (2 drying racks) 1200x750x1450 mm / 47.2"x29.5"x57.1"	Fiber-reinforced plastic 28 cm	71 / 156
56.0347.01.02-01T	Double sink (tap TOF) 1200x750x900 mm / 47.2"x29.5"x35.4"	Durcon 28 cm	91 / 200
56.0347.02.02-01T	Double sink (left side drying rack) 1200x750x1450 mm / 47.2"x29.5"x57.1"	Durcon 28 cm	96 / 211
56.0347.03.02-01T	Double sink (right side drying rack) 1200x750x1450 mm / 47.2"x29.5"x57.1"	Durcon 28 cm	96 / 211
56.0347.04.02-01T	Double sink (2 drying racks) 1200x750x1450 mm / 47.2"x29.5"x57.1"	Durcon 28 cm	100 / 220
56.0250.01.05-01	Double sink (front) with shielding glass 1500x600x1220 mm / 59.1"x23.6"x48"	Fiber-reinforced plastic 28 cm	64 / 141
56.0250.02.05-01	Double sink (right side drying rack) 1500x600x1220 mm / 59.1"x23.6"x48"	Fiber-reinforced plastic 28 cm	64 / 141
56.0250.01.02-01T	Double sink (front) with shielding glass 1500x600x1220 mm / 59.1"x23.6"x48"	Durcon 28 cm	98 / 216
56.0250.02.02-01T	Double sink (front) with shielding glass 1500x600x1220 mm / 59.1"x23.6"x48" (2 mixer taps)	Durcon 28 cm	98 / 216
56.0402.01.06-01	Mounted drying rack 500x150x550 mm / 19.7"x5.91"x21.7"		5 / 11





BALANCE TABLE, TITRATION BENCH



Balance table is equipped with special mounted vibration-free plate for setting up analytical balance and other measuring equipment.

Slab made of granite.

Dimensions - 630 x 450 mm

Width - 60 mm

Standard height - 750-900 mm

Balance table can be inserted in side table for working space enlargement.

Side table is supplied optionally.

Balance table stands on adjustable feet for floor unevenness compensation.



Balance table, titration bench

PRODUCT CODE	ITEM AND DIMENSIONS (L X W X H)	WORKTOP MATERIAL	WEIGHT KG/LBS
Balance table			
56.0226.10.09-01	Balance table 630x450x750 mm / 24.8"x17.7"x29.5"	Granite	65 / 143
56.0226.13.09-01	Balance table 630x450x900 mm / 24.8"x17.7"x35.4"	Granite	69 / 152
56.0369.10.09-01	Balance table (1 drawer) 630x450x750 mm / 24.8"x17.7"x29.5"	Granite	68 / 149
56.0369.13.09-01	Balance table (1 drawer) 630x450x900 mm / 24.8"x17.7"x35.4"	Granite	72 / 158
56.0357.01.14	Side bench for balance table 1200x750x750 mm / 47.2"x29.5"x29.5"	Laminate	29 / 63
56.0357.01.08	Side bench for balance table 1200x750x750 mm / 47.2"x29.5"x29.5"	Labgrade	32 / 70
56.0357.11.14	Side bench for balance table 1200x750x750 mm / 47.2"x29.5"x29.5" cabinet with 3 drawers	Laminate	47 / 103
56.0357.11.08	Side bench for balance table 1200x750x750 mm / 47.2"x29.5"x29.5" cabinet with 3 drawers	Labgrade	51 / 112
56.0357.02.14	Side bench for balance table 1200x750x900 mm / 47.2"x29.5"x35.4"	Laminate	30 / 66
56.0357.02.08	Side bench for balance table 1200x750x900 mm / 47.2"x29.5"x35.4"	Labgrade	33 / 72
56.0357.22.14	Side bench for balance table 1200x750x900 mm / 47.2"x29.5"x35.4" cabinet with 4 drawers	Laminate	53 / 116
56.0357.22.08	Side bench for balance table 1200x750x900 mm / 47.2"x29.5"x35.4" cabinet with 4 drawers	Labgrade	56 / 123
56.0357.03.14	Side bench for balance table 1500x750x750 mm / 59.1"x29.5"x29.5"	Laminate	33 / 72
56.0357.03.08	Side bench for balance table 1500x750x750 mm / 59.1"x29.5"x29.5"	Labgrade	40 / 88
56.0357.13.14	Side bench for balance table 1500x750x750 mm / 59.1"x29.5"x29.5" cabinet with 3 drawers	Laminate	52 / 114
56.0357.13.08	Side bench for balance table 1500x750x750 mm / 59.1"x29.5"x29.5" cabinet with 3 drawers	Labgrade	59 / 130
56.0357.04.14	Side bench for balance table 1500x750x900 mm / 59.1"x29.5"x35.4"	Laminate	34 / 74
56.0357.04.08	Side bench for balance table 1500x750x900 mm / 59.1"x29.5"x35.4"	Labgrade	41 / 90
56.0357.24.14	Side bench for balance table 1500x750x900 mm / 59.1"x29.5"x35.4" cabinet with 4 drawers	Laminate	57 / 125
56.0357.24.08	Side bench for balance table 1500x750x900 mm / 59.1"x29.5"x35.4" cabinet with 4 drawers	Labgrade	64 / 141
Titration bench			
56.0395.01.03	Titration bench 1212x750x1910 mm / 47.7"x29.5"x75.2"	Ceramics	80 / 176



LABORATORY FUME CUPBOARD

Fume cupboard is intended for safe working with volatile hazardous substances by exhaust of fumes, heavy gases, particle of liquids, etc.

Fume cupboard is a robust metal frame with epoxy coating. Fume cupboard is equipped with air duct for air exhaust from operating area of exhaust chamber. There are 2 valves on the back panel of working chamber with close flappers that allow adjusting air flows. Operating area of exhaust chamber is closed with lift triplex glass shield.

Maximum shield lift - 640 mm.

Cupboard base has 3 cabinets with doors. Left and central cabinets are equipped with fixed shelf and sliding shelf. They have separate exhaust duct on the back of exhaust chamber. Right cabinet is intended for siting of plumbing fixtures.

Working chamber has luminescent lighting unit (2x18W) which is placed on top of exhaust chamber.

Fume cupboards with explosion-proof lighting unit, the unit is placed inside the chamber and the cable is outside. Lighting switch and 3 sockets are on the front panel.

Fume cupboard equipped with sink and water valve, drain sink has siphon trap for sewage drain connection.





LABORATORY FUME CUPBOARD

Fume cupboard

PRODUCT CODE	ITEM AND DIMENSIONS (L X W X H)	WORKTOP MATERIAL	WEIGHT KG/LBS
Fume cupboard			
56.0423.00.03-01	Fume cupboard 1200x900x2145 mm / 47.2"x35.4"x84.4"	Ceramics	350 / 771
56.0423.01.08-01	Fume cupboard 1200x900x2145 mm / 47.2"x35.4"x84.4"	Labgrade	350 / 771
56.0423.02.06-01	Fume cupboard 1200x900x2145 mm / 47.2"x35.4"x84.4"	Stainless steel	345 / 760
56.0423.20.02-01	Fume cupboard 1200x900x2145 mm / 47.2"x35.4"x84.4"	Durcon	355 / 782
56.0425.00.03-01	Fume cupboard 1500x900x2145 mm / 59.1"x35.4"x84.4"	Ceramics	370 / 815
56.0425.01.08-01	Fume cupboard 1500x900x2145 mm / 59.1"x35.4"x84.4"	Labgrade	370 / 815
56.0425.02.06-01	Fume cupboard 1500x900x2145 mm / 59.1"x35.4"x84.4"	Stainless steel	365 / 840
56.0425.20.02-01	Fume cupboard 1500x900x2145 mm / 59.1"x35.4"x84.4"	Durcon	375 / 826
Fume cupboard with water valve			
56.0423.03.03-01	Fume cupboard 1200x900x2145 mm / 47.2"x35.4"x84.4"	Ceramics	350 / 771
56.0423.04.08-01	Fume cupboard 1200x900x2145 mm / 47.2"x35.4"x84.4"	Labgrade	350 / 771
56.0423.05.06-01	Fume cupboard 1200x900x2145 mm / 47.2"x35.4"x84.4"	Stainless steel	345 / 760
56.0423.21.02-01T	Fume cupboard 1200x900x2145 mm / 47.2"x35.4"x84.4" (tap TOF)	Durcon	355 / 782
56.0425.03.03-01	Fume cupboard 1500x900x2145 mm / 59.1"x35.4"x84.4"	Ceramics	370 / 815
56.0425.04.08-01	Fume cupboard 1500x900x2145 mm / 59.1"x35.4"x84.4"	Labgrade	370 / 815
56.0425.05.06-01	Fume cupboard 1500x900x2145 mm / 59.1"x35.4"x84.4"	Stainless steel	365 / 840
56.0425.21.02-01T	Fume cupboard 1500x900x2145 mm / 59.1"x35.4"x84.4" (tap TOF)	Durcon	375 / 826
Fume cupboard with explosion-proof lighting unit			
56.0423B.09.03-01	Fume cupboard 1200x900x2145 mm / 47.2"x35.4"x84.4"	Ceramics	350 / 771
56.0423B.10.08-01	Fume cupboard 1200x900x2145 mm / 47.2"x35.4"x84.4"	Labgrade	350 / 771
56.0423B.11.06-01	Fume cupboard 1200x900x2145 mm / 47.2"x35.4"x84.4"	Stainless steel	345 / 760
56.0423B.23.02-01	Fume cupboard 1200x900x2145 mm / 47.2"x35.4"x84.4"	Durcon	355 / 782
56.0425B.09.03-01	Fume cupboard 1500x900x2145 mm / 59.1"x35.4"x84.4"	Ceramics	370 / 815
56.0425B.10.08-01	Fume cupboard 1500x900x2145 mm / 59.1"x35.4"x84.4"	Labgrade	370 / 815
56.0425B.11.06-01	Fume cupboard 1500x900x2145 mm / 59.1"x35.4"x84.4"	Stainless steel	365 / 840
56.0425B.23.02-01	Fume cupboard 1500x900x2145 mm / 59.1"x35.4"x84.4"	Durcon	375 / 826
Fume cupboard (water valve and explosion-proof lighting unit)			
56.0423B.12.03-01	Fume cupboard 1200x900x2145 mm / 47.2"x35.4"x84.4"	Ceramics	350 / 771
56.0423B.13.08-01	Fume cupboard 1200x900x2145 mm / 47.2"x35.4"x84.4"	Labgrade	350 / 771
56.0423B.14.06-01	Fume cupboard 1200x900x2145 mm / 47.2"x35.4"x84.4"	Stainless steel	345 / 760
56.0423B.24.02-01T	Fume cupboard 1200x900x2145 mm / 47.2"x35.4"x84.4" tap TOF	Durcon	355 / 782
56.0425B.12.03-01	Fume cupboard 1500x900x2145 mm / 59.1"x35.4"x84.4"	Ceramics	370 / 815
56.0425B.13.08-01	Fume cupboard 1500x900x2145 mm / 59.1"x35.4"x84.4"	Labgrade	370 / 815
56.0425B.14.06-01	Fume cupboard 1500x900x2145 mm / 59.1"x35.4"x84.4"	Stainless steel	365 / 840
56.0425B.24.02-01 T	Fume cupboard 1500x900x2145 mm / 59.1"x35.4"x84.4" tap TOF	Durcon	375 / 826
Fume cupboard (sink and mixer tap)			
56.0423.19.06-01	Fume cupboard 1200x900x2145 mm / 47.2"x35.4"x84.4" stainless steel sink	Stainless steel	350 / 771
56.0423.28.08-01	Fume cupboard 1200x900x2145 mm / 47.2"x35.4"x84.4" stainless steel sink	Labgrade	350 / 771
56.0423.30.08-01	Fume cupboard 1200x900x2145 mm / 47.2"x35.4"x84.4" fiber-reinforced plastic sink	Labgrade	345 / 760
56.0423.27.02-01T	Fume cupboard 1200x900x2145 mm / 47.2"x35.4"x84.4" Durcon sink, TOF tap	Durcon	355 / 782
56.0425.19.06-01	Fume cupboard 1500x900x2145 mm / 59.1"x35.4"x84.4" stainless steel sink	Stainless steel	370 / 815
56.0425.28.08-01	Fume cupboard 1500x900x2145 mm / 59.1"x35.4"x84.4" stainless steel sink	Labgrade	370 / 815
56.0425.30.08-01	Fume cupboard 1500x900x2145 mm / 59.1"x35.4"x84.4" fiber-reinforced plastic sink	Labgrade	365 / 840
56.0425.27.02-01T	Fume cupboard 1500x900x2145 mm / 59.1"x35.4"x84.4" Durcon sink, TOF tap	Durcon	375 / 826
Fume cupboard (sink, mixer tap and explosion-proof lighting unit)			
56.0423B.18.06-01	Fume cupboard 1200x900x2145 mm / 47.2"x35.4"x84.4" stainless steel sink	Stainless steel	345 / 760
56.0423B.29.08-01	Fume cupboard 1200x900x2145 mm / 47.2"x35.4"x84.4" stainless steel sink	Labgrade	350 / 771
56.0423B.31.08-01	Fume cupboard 1200x900x2145 mm / 47.2"x35.4"x84.4" fiber-reinforced plastic sink	Labgrade	350 / 771
56.0423B.26.02-01T	Fume cupboard 1200x900x2145 mm / 47.2"x35.4"x84.4" Durcon sink, mixer tap TOF	Durcon	355 / 782
56.0425B.18.06-01	Fume cupboard 1500x900x2145 mm / 59.1"x35.4"x84.4" stainless steel sink	Stainless steel	365 / 840
56.0425B.29.08-01	Fume cupboard 1500x900x2145 mm / 59.1"x35.4"x84.4" stainless steel sink	Labgrade	370 / 815
56.0425B.31.08-01	Fume cupboard 1500x900x2145 mm / 59.1"x35.4"x84.4" fiber-reinforced plastic sink	Labgrade	370 / 815
56.0425B.26.02-01T	Fume cupboard 1500x900x2145 mm / 59.1"x35.4"x84.4" Durcon sink, mixer tap TOF	Durcon	375 / 826
56.0096.10.00-01	Fume hood 550x700x500 mm / 21.7"x27.6"x19.7"		7 / 15
Cupboard for drying ovens			
56.0525.11.03-01	Cupboard for drying ovens 920x780x1870 mm / 36.2"x30.7"x73.6"	Ceramics	85 / 187
56.0553.11.03	Cupboard for drying ovens 1210x850x1895 mm / 47.6"x33.5"x74.6"	Ceramics	90 / 198



LABORATORY FUME CUPBOARD

Fume cupboard with lighting unit

PRODUCT CODE	ITEM AND DIMENSIOINS (L X W X H)	WORKTOP MATERIAL	WEIGHT KG/LBS
Fume cupboard with lighting units			
56.0427.00.03-01	Fume cupboard 2000x900x2145 mm / 78.7"x35.4"x84.4" (2 lighting units)	Ceramics	410 / 903
56.0427.01.08-01	Fume cupboard 2000x900x2145 mm / 78.7"x35.4"x84.4" (2 lighting units)	Labgrade	410 / 903
56.0427.02.06-01	Fume cupboard 2000x900x2145 mm / 78.7"x35.4"x84.4" (2 lighting units)	Stainless steel	405 / 892
56.0427.03.03-01	Fume cupboard 2000x900x2145 mm / 78.7"x35.4"x84.4" (2 lighting units, 2 water inlets)	Ceramics	410 / 903
56.0427.04.08-01	Fume cupboard 2000x900x2145 mm / 78.7"x35.4"x84.4" (2 lighting units, 2 water inlets)	Labgrade	410 / 903
56.0427.05.06-01	Fume cupboard 2000x900x2145 mm / 78.7"x35.4"x84.4" (2 lighting units, 2 water inlets)	Stainless steel	405 / 892
56.0427B.09.03-01	Fume cupboard 2000x900x2145 mm / 78.7"x35.4"x84.4" explosion-proof lighting unit	Ceramics	410 / 903
56.0427B.10.08-01	Fume cupboard 2000x900x2145 mm / 78.7"x35.4"x84.4" explosion-proof lighting unit	Labgrade	410 / 903
56.0427B.11.06-01	Fume cupboard 2000x900x2145 mm / 78.7"x35.4"x84.4" explosion-proof lighting unit	Stainless steel	405 / 892
56.0427B.12.03-01	Fume cupboard 2000x900x2145 mm / 78.7"x35.4"x84.4" (explosion-proof lighting unit, 2 water inlets)	Ceramics	410 / 903
56.0427B.13.08-01	Fume cupboard 2000x900x2145 mm / 78.7"x35.4"x84.4" (explosion-proof lighting unit, 2 water inlets)	Labgrade	410 / 903
56.0427B.14.06-01	Fume cupboard 2000x900x2145 mm / 78.7"x35.4"x84.4" (explosion-proof lighting unit, 2 water inlets)	Stainless steel	405 / 892
Fume cupboard with fiber-reinforced plastic chamber			
56.0450.00.03-01	Fume cupboard 1500x910x2240 mm / 59.1"x35.8"x88.2"	Ceramics	350 / 771
56.0450.01.08-01	Fume cupboard 1500x910x2240 mm / 59.1"x35.8"x88.2"	Labgrade	350 / 771
56.0450.03.03-01	Fume cupboard 1500x910x2240 mm / 59.1"x35.8"x88.2" (with water inlet)	Ceramics	350 / 771
56.0450.04.08-01	Fume cupboard 1500x910x2240 mm / 59.1"x35.8"x88.2" (with water inlet)	Labgrade	350 / 771
56.0450.09.03-01	Fume cupboard 1500x910x2240 mm / 59.1"x35.8"x88.2" (with explosion-proof lighting unit)	Ceramics	350 / 771
56.0450.10.08-01	Fume cupboard 1500x910x2240 mm / 59.1"x35.8"x88.2" (with explosion-proof lighting unit)	Labgrade	350 / 771
56.0450.12.03-01	Fume cupboard 1500x910x2240 mm / 59.1"x35.8"x88.2" (with water inlet and explosion-proof lighting unit)	Ceramics	350 / 771
56.0450.13.08-01	Fume cupboard 1500x910x2240 mm / 59.1"x35.8"x88.2" (with water inlet and explosion-proof lighting unit)	Labgrade	350 / 771
56.0450.11.03-01	Fume cupboard with hot plate 1500x910x2240 mm / 59.1"x35.8"x88.2"	Ceramics	350 / 771

Fume cupboard is intended for 2 work-space arrangements.

The cupboard is a metal frame made of slab steel and square tubing. Metal components are coated with powder.

Working chamber made of fiber-reinforced plastic resistant to corrosive substances, concentrated acids and high temperature.

Lift protective shield made of triplex glass provides access to working space. Max. lift height of the shield is 58 mm.

Lighting is provided either with luminescent or explosion-proof lighting unit which are placed on top of the working chamber.

Fume cupboard can be equipped with ceramic or epoxy composite worktop, hot plate, water valve, gas valve and drain sink.

Cupboard underbench unit has 3 cabinets with doors. Left and central cabinets are equipped with fixed shelf and sliding shelf. They have separate exhaust duct on the back of exhaust chamber. Right cabinet is intended for siting of plumbing fixtures.

Lighting switch, 3 splash-proof sockets 220V, electrical break automat 10A are placed on the front panel.

If the fume cupboard is equipped with hot plate, control board for the hot plate is placed on the front panel.

Cupboard stands on adjustable rests.

Technical data:

Height, cm - 230

Length, cm - 150

Depth, cm - 91





Furniture for schools and institutions «EVRIKA»

EVRIKA furniture is intended for work space equipping in science classrooms. The furniture is made of metal which ensures robustness, rigidity and life duration.

Robust metal constructions from square tube and rectangular tube (30x60x2.0 mm and 30x30x1.2 mm).

Frame assembly is covered with paint RAL7035 with powder coating.

Contents

Student desk	44
Experiment desk	46
Teacher desk	48
Experimenting bench	49
Demonstration fume cupboard	49
Demonstration fume cupboard	52

STUDENT DESK

Student desk is intended for classrooms where classes of chemistry, physics and biology are held. The desks stand on adjustable feet.



Student desk

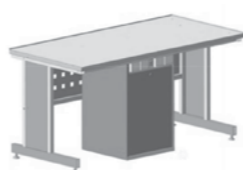
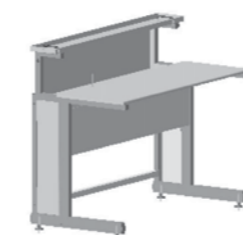
PRODUCT CODE	ITEM AND DIMENSIONS (L X W X H)	WORKTOP MATERIAL	WEIGHT KG/LBS
56.0217.00.04	Student desk 1200x600x760 mm / 47.2"x23.6"x29.9"	White laminate	44 / 88
56.0217.00.04-01	Student desk 1200x600x760 mm / 47.2"x23.6"x29.9"	White laminate	40 / 88
56.0217.00.14	Student desk 1200x600x760 mm / 47.2"x23.6"x29.9"	Gray laminate	40 / 88
56.0217.00.14-01	Student desk 1200x600x760 mm / 47.2"x23.6"x29.9"	Gray laminate	40 / 88

PRODUCT CODE	ITEM AND DIMENSIONS (L X W X H)	WORKTOP MATERIAL	WEIGHT KG/LBS
56.0217.01.04	Student desk with board 1200x600x840 mm / 47.2"x23.6"x33.1"	White laminate	44 / 97
56.0217.01.04-01	Student desk with board 1200x600x840 mm / 47.2"x23.6"x33.1"	White laminate	44 / 97
56.0217.01.14	Student desk with board 1200x600x840 mm / 47.2"x23.6"x33.1"	Gray laminate	44 / 97
56.0217.01.14-01	Student desk with board 1200x600x840 mm / 47.2"x23.6"x33.1"	Gray laminate	44 / 97

PRODUCT CODE	ITEM AND DIMENSIONS (L X W X H)	WORKTOP MATERIAL	WEIGHT KG/LBS
56.0217.02.04	Student desk with board and sockets 1200x600x840 mm / 47.2"x23.6"x33.1"	White laminate	45 / 99
56.0217.02.04-01	Student desk with board and sockets 1200x600x840 mm / 47.2"x23.6"x33.1"	White laminate	45 / 99
56.0217.02.14	Student desk with board and sockets 1200x600x840 mm / 47.2"x23.6"x33.1"	Gray laminate	45 / 99
56.0217.02.14-01	Student desk with board and sockets 1200x600x840 mm / 47.2"x23.6"x33.1"	Gray laminate	45 / 99

PRODUCT CODE	ITEM AND DIMENSIONS (L X W X H)	WORKTOP MATERIAL	WEIGHT KG/LBS
56.0217.03.04	Student desk with perforated screen and boards 1200x600x1360 mm / 47.2"x23.6"x53.5"	White laminate	50 / 110
56.0217.03.14	Student desk with perforated screen and boards 1200x600x1360 mm / 47.2"x23.6"x53.5"	Gray laminate	50 / 110

PRODUCT CODE	ITEM AND DIMENSIONS (L X W X H)	WORKTOP MATERIAL	WEIGHT KG/LBS
56.0440.00.18-01	Student desk with water inlet 1210x610x760 mm / 47.6"x24"x29.9"	Labgrade-light	52 / 114
56.0440.00.03-01	Student desk with water inlet 1210x610x760 mm / 47.6"x24"x29.9"	Ceramics	55 / 121



STUDENT DESK



PRODUCT CODE	ITEM AND DIMENSIONS (L X W X H)	WORKTOP MATERIAL	WEIGHT KG/LBS
56.0204.00.04-01	Student desk with sliding unit 1200x600x1025 mm / 47.2"x23.6"x40.4"	White laminate	50 / 110
56.0204.00.14-01	Student desk with sliding unit 1200x600x1025 mm / 47.2"x23.6"x40.4"	Gray laminate	50 / 110

PRODUCT CODE	ITEM AND DIMENSIONS (L X W X H)	WORKTOP MATERIAL	WEIGHT KG/LBS
56.0214.01.04-01	Student desk (sliding unit + sockets) 1200x600x1025 mm / 47.2"x23.6"x40.4"	White laminate	50 / 110
56.0214.01.14-01	Student desk (sliding unit + sockets) 1200x600x1025 mm / 47.2"x23.6"x40.4"	Gray laminate	50 / 110

PRODUCT CODE	ITEM AND DIMENSIONS (L X W X H)	WORKTOP MATERIAL	WEIGHT KG/LBS
56.0254.00.04-01	Student desk with flap 1200x600x760 mm / 47.2"x23.6"x29.9"	White laminate	55 / 121
56.0254.00.14-01	Student desk with flap 1200x600x760 mm / 47.2"x23.6"x29.9"	Gray laminate	55 / 121

PRODUCT CODE	ITEM AND DIMENSIONS (L X W X H)	WORKTOP MATERIAL	WEIGHT KG/LBS
56.0254.01.14-01	Student desk (flap + sockets) 1200x600x760 mm / 47.2"x23.6"x29.9"	Gray laminate	55 / 121
56.0254.01.04-01	Student desk (flap + sockets) 1200x600x760 mm / 47.2"x23.6"x29.9"	White laminate	55 / 121

PRODUCT CODE	ITEM AND DIMENSIONS (L X W X H)	WORKTOP MATERIAL	WEIGHT KG/LBS
56.0545.00.18	Student desk (service module + electrical equipment) 1515x750x760 mm / 59.6"x29.5"x29.9"	Labgrade-light	57 / 125
56.0545.00.18-01	Student desk (service module + electrical equipment) 1515x750x760 mm / 59.6"x29.5"x29.9"	Labgrade-light	57 / 125

PRODUCT CODE	ITEM AND DIMENSIONS (L X W X H)	WORKTOP MATERIAL	WEIGHT KG/LBS
56.0544.00.18	Student desk (service module + electrical equipment + water inlet) 1515x750x760 mm / 59.6"x29.5"x29.9"	Labgrade-light	60 / 132
56.0544.00.18-01	Student desk (service module + electrical equipment + water inlet) 1515x750x760 mm / 59.6"x29.5"x29.9"	Labgrade-light	60 / 132

DEMONSTRATION BENCH

Experiment desk is intended for conduction of experiments by a teacher in science classrooms.



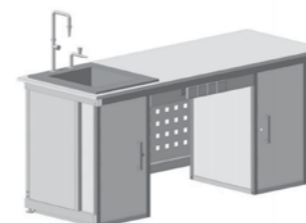
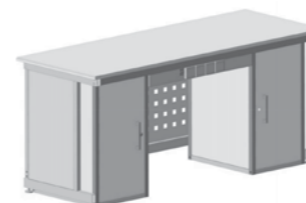
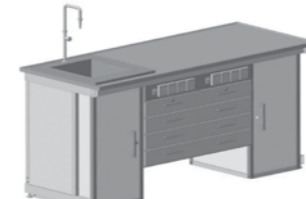
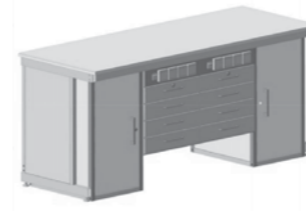
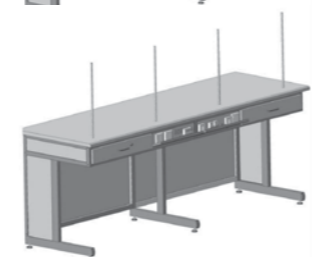
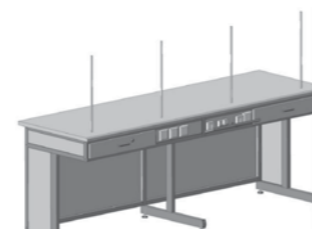
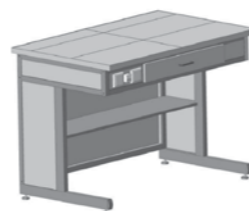
Demonstration bench

PRODUCT CODE	ITEM AND DIMENSIONS (L X W X H)	WORKTOP MATERIAL	WEIGHT KG/LBS
56.0206.00.04-01	Demonstration bench 1200x750x900 mm / 47.2"x29.5"x35.4"	White laminate	57 / 125
56.0206.00.14-01	Demonstration bench 1200x750x900 mm / 47.2"x29.5"x35.4"	Gray laminate	57 / 125
56.0206.00.03-01	Demonstration bench 1210x750x900 mm / 47.6"x29.5"x35.4"	Ceramics	60 / 132
56.0206.00.18-01	Demonstration bench 1210x750x900 mm / 47.6"x29.5"x35.4"	Labgrade-light	57 / 125

PRODUCT CODE	ITEM AND DIMENSIONS (L X W X H)	WORKTOP MATERIAL	WEIGHT KG/LBS
56.0454.01.18-01	Demonstration bench with water inlet 1210x750x900 mm / 47.6"x29.5"x35.4"	Labgrade-light	47 / 103
56.0454.01.03-01	Demonstration bench with water inlet 1210x750x900 mm / 47.6"x29.5"x35.4"	Ceramics	50 / 110

PRODUCT CODE	ITEM AND DIMENSIONS (L X W X H)	WORKTOP MATERIAL	WEIGHT KG/LBS
56.0216.00.04	Demonstration bench 2400x750x900 mm / 94.5"x29.5"x35.4"	White laminate	120 / 264
56.0216.00.14	Demonstration bench 2400x750x900 mm / 94.5"x29.5"x35.4"	Gray laminate	120 / 264

PRODUCT CODE	ITEM AND DIMENSIONS (L X W X H)	WORKTOP MATERIAL	WEIGHT KG/LBS
56.0216.01.04	Demonstration bench with electrical equipment 2400x750x900 mm / 94.5"x29.5"x35.4"	White laminate	140 / 308
56.0216.01.14	Demonstration bench with electrical equipment 2400x750x900 mm / 94.5"x29.5"x35.4"	Gray laminate	140 / 308



DEMONSTRATION BENCH



PRODUCT CODE	ITEM AND DIMENSIONS (L X W X H)	WORKTOP MATERIAL	WEIGHT KG/LBS
56.0551.00.04	Demonstration bench (2 underbench cabinets + 2 suspended cabinets + electrical equipment) 2000x750x900 mm / 78.7"x29.5"x35.4"	White laminate	154 / 339
56.0551.00.14	Demonstration bench (2 underbench cabinets + 2 suspended cabinets + electrical equipment) 2000x750x900 mm / 78.7"x29.5"x35.4"	Gray laminate	154 / 339
56.0551.01.18	Demonstration bench (2 underbench cabinets + 2 suspended cabinets + electrical equipment + water inlet) 2000x750x900 mm / 78.7"x29.5"x35.4"	Labgrade-light	154 / 339

PRODUCT CODE	ITEM AND DIMENSIONS (L X W X H)	WORKTOP MATERIAL	WEIGHT KG/LBS
56.0551.01.08	Demonstration bench (2 underbench cabinets + 2 suspended cabinets + electrical equipment + water inlet) 2000x750x900 mm / 78.7"x29.5"x35.4"	White laminate	140 / 308
56.0551.01.18	Demonstration bench (2 underbench cabinets + 2 suspended cabinets + electrical equipment + water inlet) 2000x750x900 mm / 78.7"x29.5"x35.4"	Gray laminate	140 / 308

PRODUCT CODE	ITEM AND DIMENSIONS (L X W X H)	WORKTOP MATERIAL	WEIGHT KG/LBS
56.0573.00.04	Demonstration bench (2 underbench cabinets + electrical equipment) 2000x750x900 mm / 78.7"x29.5"x35.4"	White laminate	110 / 242
56.0573.00.14	Demonstration bench (2 underbench cabinets + electrical equipment) 2000x750x900 mm / 78.7"x29.5"x35.4"	Gray laminate	110 / 242
56.0573.00.08	Demonstration bench (2 underbench cabinets + electrical equipment) 2000x750x900 mm / 78.7"x29.5"x35.4"	Labgrade	110 / 242
56.0573.00.18	Demonstration bench (2 underbench cabinets + electrical equipment) 2000x750x900 mm / 78.7"x29.5"x35.4"	Labgrade-light	110 / 242

PRODUCT CODE	ITEM AND DIMENSIONS (L X W X H)	WORKTOP MATERIAL	WEIGHT KG/LBS
56.0573.01.08	Demonstration bench (2 underbench cabinets + electrical equipment + water inlet) 2000x750x900 mm / 78.7"x29.5"x35.4"	Labgrade	115 / 253
56.0573.01.18	Demonstration bench (2 underbench cabinets + electrical equipment + water inlet) 2000x750x900 mm / 78.7"x29.5"x35.4"	Labgrade-light	115 / 253

TEACHER DESK



Teacher desk is equipped with fixed worktop with shelf on top. Back sides and side pieces of the desks are covered with panels.

The desks stand on adjustable feet.

Teacher desk

PRODUCT CODE	ITEM AND DIMENSIONS (L X W X H)	WORKTOP MATERIAL	WEIGHT KG/LBS
56.0207.00.04-01	Teacher desk with shelf 1200x750x950 mm / 47.2"x29.5"x37.4"	white laminate	45 / 99
56.0207.00.14-01	Teacher desk with shelf 1200x750x950 mm / 47.2"x29.5"x37.4"	gray laminate	45 / 99

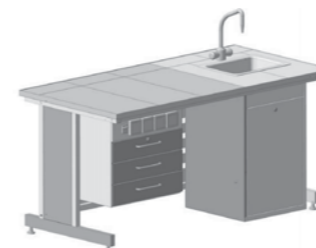
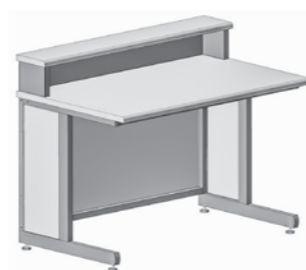
Teacher desk with suspended cabinet

Teacher desk with suspended cabinet is equipped with service panel under the worktop. The service panel has 4 splash-proof sockets, switchboard equipment. Internet connection slot can be installed upon request.

The desk is equipped with a suspended cabinet with 3 drawers. Back side and side pieces of the desk is covered with panels. They stand on adjustable feet.

PRODUCT CODE	ITEM AND DIMENSIONS (L X W X H)	WORKTOP MATERIAL	WEIGHT KG/LBS
56.0546.00.04	Teacher desk with suspended cabinet and electrical equipment + slot 1500x750x760 mm / 59.1"x29.5"x29.9"	white laminate	63 / 138
56.0546.00.04-01	Teacher desk with suspended cabinet and electrical equipment + slot 1500x750x760 mm / 59.1"x29.5"x29.9"	white laminate	63 / 138
56.0546.00.14	Teacher desk with suspended cabinet and electrical equipment + slot 1500x750x760 mm / 59.1"x29.5"x29.9"	gray laminate	63 / 138
56.0546.00.14-01	Teacher desk with suspended cabinet and electrical equipment + slot 1500x750x760 mm / 59.1"x29.5"x29.9"	gray laminate	63 / 138

PRODUCT CODE	ITEM AND DIMENSIONS (L X W X H)	WORKTOP MATERIAL	WEIGHT KG/LBS
56.0546.01.04	Teacher desk with suspended cabinet and electrical equipment 1500x750x760 mm / 59.1"x29.5"x29.9"	white laminate	63 / 138
56.0546.01.04-01	Teacher desk with suspended cabinet and electrical equipment 1500x750x760 mm / 59.1"x29.5"x29.9"	white laminate	63 / 138
56.0546.01.14	Teacher desk with suspended cabinet and electrical equipment 1500x750x760 mm / 59.1"x29.5"x29.9"	gray laminate	63 / 138
56.0546.01.14-01	Teacher desk with suspended cabinet and electrical equipment 1500x750x760 mm / 59.1"x29.5"x29.9"	gray laminate	63 / 138
56.0546.01.18	Teacher desk with suspended cabinet and electrical equipment 1515x750x760 mm / 59.6"x29.5"x29.9"	Labgrade-light	63 / 138
56.0546.01.18-01	Teacher desk with suspended cabinet and electrical equipment 1515x750x760 mm / 59.6"x29.5"x29.9"	Labgrade-light	63 / 138



EXPERIMENT BENCH



Experiment bench worktop is equipped with PP sink and mixer tap. Service panel placed under the bench worktop includes 4 splash-proof sockets and switchboard equipment.

The bench is equipped with a suspended cabinet, 3 drawers and service module for sanitary system. Back and side pieces of the bench are covered with panels. The benches stand on adjustable feet.

Experiment bench

PRODUCT CODE	ITEM AND DIMENSIONS (L X W X H)	WORKTOP MATERIAL	WEIGHT KG/LBS
56.0572.00.03	Experiment bench (suspended cabinet + electrical equipment + water inlet) 1515x750x760 mm / 59.6"x29.5"x29.9"	Ceramics	115 / 253
56.0572.00.03-01	Experiment bench (suspended cabinet + electrical equipment + water inlet) 1515x750x760 mm / 59.6"x29.5"x29.9"	Ceramics	115 / 253
56.0572.00.18	Experiment bench (suspended cabinet + electrical equipment + water inlet) 1515x750x760 mm / 59.6"x29.5"x29.9"	Labgrade-light	105 / 231
56.0572.00.18-01	Experiment bench (suspended cabinet + electrical equipment + water inlet) 1515x750x760 mm / 59.6"x29.5"x29.9"	Labgrade-light	105 / 231

DEMONSTRATION FUME CUPBOARD

Demonstration fume cupboard is intended for conduction of demonstration experiments while aggressive volatile substances. Glass walls of the cupboard allows watching experiments from anywhere in classroom.

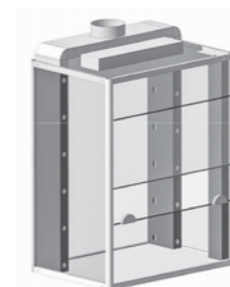
Demonstration fume cupboard can be completed with/without water supply, with/without electrical equipment.

The fume cupboards stand on adjustable feet.

Demonstration fume cupboard

PRODUCT CODE	ITEM AND DIMENSIONS (L X W X H)	WORKTOP MATERIAL	WEIGHT KG/LBS
56.0568.00.03	Bench mounted demonstration fume cupboard 950x650x1345 mm / 37.4"x25.6"x53"	Ceramics	65 / 143
56.0568.00.18	Bench mounted demonstration fume cupboard 950x650x1345 mm / 37.4"x25.6"x53"	Labgrade-light	63 / 138

PRODUCT CODE	ITEM AND DIMENSIONS (L X W X H)	WORKTOP MATERIAL	WEIGHT KG/LBS
56.0569.00.03	Floor-mounted demonstration fume cupboard 950x650x2245 mm / 37.4"x25.6"x88.4"	Ceramics	83 / 182
56.0569.00.18	Floor-mounted demonstration fume cupboard 950x650x2245 mm / 37.4"x25.6"x88.4"	Labgrade-light	81 / 178



DEMONSTRATION FUME CUPBOARD

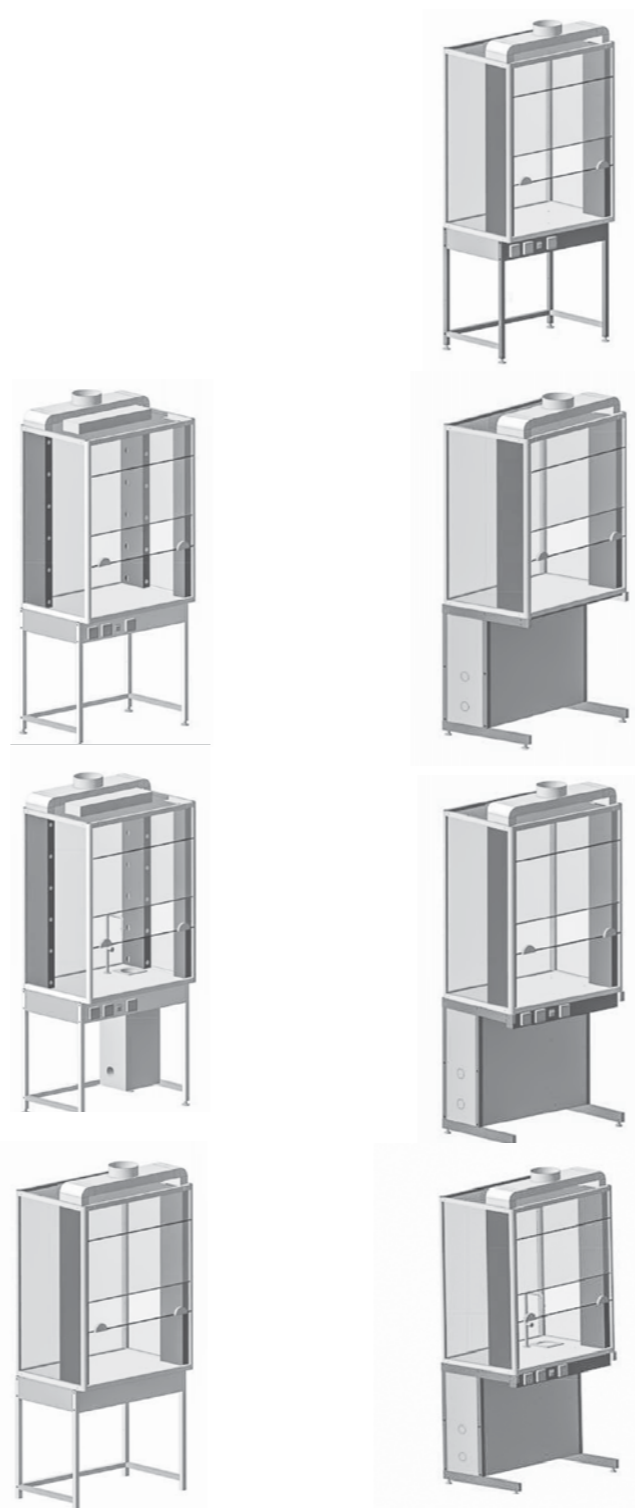


Demonstration fume cupboard

PRODUCT CODE	ITEM AND DIMENSIONS (L X W X H)	WORKTOP MATERIAL	WEIGHT KG/LBS
56.0569.01.18	Floor-mounted demonstration fume cupboard with electrical equipment 950x650x2245 mm / 37.4"x25.6"x88.4"	Labgrade-light	82 / 180
56.0569.01.03	Floor-mounted demonstration fume cupboard with electrical equipment 950x650x2245 mm / 37.4"x25.6"x88.4"	Ceramics	84 / 185

PRODUCT CODE	ITEM AND DIMENSIONS (L X W X H)	WORKTOP MATERIAL	WEIGHT KG/LBS
56.0569.02.03	Floor-mounted demonstration fume cupboard with electrical equipment and water inlet 950x650x2245 mm / 37.4"x25.6"x88.4"	Ceramics	94 / 207
56.0569.02.18	Floor-mounted demonstration fume cupboard with electrical equipment and water inlet 950x650x2245 mm / 37.4"x25.6"x88.4"	Labgrade-light	92 / 202

PRODUCT CODE	ITEM AND DIMENSIONS (L X W X H)	WORKTOP MATERIAL	WEIGHT KG/LBS
56.0567.00.03	Demonstration fume cupboard 950x650x2245 mm / 37.4"x25.6"x88.4"	Ceramics	80 / 176
56.0567.00.18	Demonstration fume cupboard 950x650x2245 mm / 37.4"x25.6"x88.4"	Labgrade-light	82 / 180



DEMONSTRATION FUME CUPBOARD



PRODUCT CODE	ITEM AND DIMENSIONS (L X W X H)	WORKTOP MATERIAL	WEIGHT KG/LBS
56.0567.01.03	Floor-mounted fume cupboard with electrical equipment 950x650x2245 mm / 37.4"x25.6"x88.4"	Ceramics	81 / 178
56.0567.01.18	Floor-mounted fume cupboard with electrical equipment 950x650x2245 mm / 37.4"x25.6"x88.4"	Labgrade-light	79 / 174

PRODUCT CODE	ITEM AND DIMENSIONS (L X W X H)	WORKTOP MATERIAL	WEIGHT KG/LBS
56.0567.10.03	Floor-mounted fume cupboard (EU feet) 950x650x2245 mm / 37.4"x25.6"x88.4"	Ceramics	84 / 185
56.0567.10.18	Floor-mounted fume cupboard (EU feet) 950x650x2245 mm / 37.4"x25.6"x88.4"	Labgrade-light	82 / 180

PRODUCT CODE	ITEM AND DIMENSIONS (L X W X H)	WORKTOP MATERIAL	WEIGHT KG/LBS
56.0567.11.03	Floor-mounted fume cupboard with electrical equipment (EU feet) 950x650x2245 mm / 37.4"x25.6"x88.4"	Ceramics	88 / 194
56.0567.11.18	Floor-mounted fume cupboard with electrical equipment (EU feet) 950x650x2245 mm / 37.4"x25.6"x88.4"	Labgrade-light	86 / 189

PRODUCT CODE	ITEM AND DIMENSIONS (L X W X H)	WORKTOP MATERIAL	WEIGHT KG/LBS
56.0567.12.03	Floor-mounted fume cupboard with electrical equipment and water inlet (EU feet) 950x650x2245 mm / 37.4"x25.6"x88.4"	Ceramics	88 / 194
56.0567.12.18	Floor-mounted fume cupboard with electrical equipment and water inlet (EU feet) 950x650x2245 mm / 37.4"x25.6"x88.4"	Labgrade-light	86 / 189

DEMONSTRATION FUME CUPBOARD

Demonstration fume cupboard is intended for conduction of experiments where aggressive volatile substances are used. Cupboard back wall has viewing window (820 x 720 mm) that allows watching experiments from anywhere in classroom. The fume cupboard is equipped with shock-proof lift shield made of triplex glass with maximum lift height - 700 mm. Ventilating openings that control air flows are placed on the back of exhaust chamber.

Standard complete set: luminescent lighting unit on top of the cupboard, 1 sink, 1 siphon, 1 cold water tap, 1 cold water tap with filter for ejector pump connection.

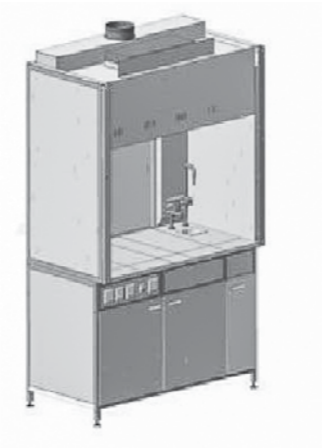
The fume cupboard can be optionally equipped with gas tap. The fume cupboard base has 3 sections with doors. Each section is equipped with shelf. Left section and right section has drawers.

There are 3 splash-proof sockets, power switch and electrical break automat.

The fume cupboard stands on adjustable rests. Supplied pre-assembled.

Fume cupboard

PRODUCT CODE	ITEM AND DIMENSIONS (L X W X H)	WORKTOP MATERIAL	WEIGHT KG/LBS
56.0549.10.03-01	Demonstration fume cupboard 1500x800x2140 mm / 59.1"x31.5"x84.3" (glass back wall)	Ceramics	350 / 771



Storage cabinet

Storage cabinets are intended for storage of different documents and consumable materials.

Cabinet doors made of metal. It is equipped with lock.

The storage cabinets stand on adjustable rests.

PRODUCT CODE	ITEM AND DIMENSIONS (L X W X H)	WEIGHT KG/LBS
56.0570.10.00	Storage cabinet (2 sections + 4 doors) 905x435x1970 mm / 35.6"x17.1"x77.6"	80 / 176
56.0570.10.00-01	Storage cabinet (2 sections + 4 doors) 905x435x1970 mm / 35.6"x17.1"x77.6"	80 / 176



PRODUCT CODE	ITEM AND DIMENSIONS (L X W X H)	WEIGHT KG/LBS
56.0558.10.00	Storage cabinet (2 sections + 4 doors) 905x615x1970 mm / 35.6"x22.2"x77.6"	88 / 194
56.0558.10.00-01	Storage cabinet (2 sections + 4 doors) 905x615x1970 mm / 35.6"x22.2"x77.6"	88 / 194

GENERAL PURPOSE LABORATORY FURNITURE



Cabinet	54
Mobile cabinet	54
Laboratory chairs and stools	56
Additional equipment for sink benches.....	57
Storage cabinet	58
Clothes cabinet.....	60
Multiple-purpose cabinet.....	61
Fume cupboard for hot plates	61
Service unit	62
Wall bookshelf	62
Fume hood	62
Fume cupboard	63



CABINET

Cabinet 610x450x1060 mm / 24"x17.7"x41.7"

PRODUCT CODE	ITEM AND DIMENSIONS (L X W X H)	WORKTOP MATERIAL	WEIGHT KG/LBS
56.0519.01.04-01	Cabinet (white) 610x450x1060 mm / 24"x17.7"x41.7"	White laminate	32 / 70
56.0519.01.14-01	Cabinet (white) 610x450x1060 mm / 24"x17.7"x41.7"	Gray laminate	32 / 70
56.0519.11.04-01	Cabinet (gray) 610x450x1060 mm / 24"x17.7"x41.7"	White laminate	32 / 70
56.0519.11.144)1	Cabinet (gray) 610x450x1060 mm / 24"x17.7"x41.7"	Gray laminate	32 / 70

Cabinet (2 doors) 910x450x1060 mm / 35.8"x17.7"x41.7"

PRODUCT CODE	ITEM AND DIMENSIONS (L X W X H)	WORKTOP MATERIAL	WEIGHT KG/LBS
56.0518.01.04-01	Cabinet (2 doors, white) 910x450x1060 mm / 35.8"x17.7"x41.7" white	White laminate	42 / 92
56.0518.01.14-01	Cabinet (2 doors, white) 910x450x1060 mm / 35.8"x17.7"x41.7" white	Gray laminate	42 / 92
56.0518.11.044)1	Cabinet (2 doors, white) 910x450x1060 mm / 35.8"x17.7"x41.7" gray	White laminate	42 / 92
56.0518.11.14-01	Cabinet (2 doors, white) 910x450x1060 mm / 35.8"x17.7"x41.7" gray	Gray laminate	42 / 92
56.0548.01.04-01	Cabinet (2 doors, white) 910x600x1060 mm / 35.8"x23.6"x41.7" white	White laminate	48 / 105
56.0548.01.14-01	Cabinet (2 doors, white) 910x600x1060 mm / 35.8"x23.6"x41.7" white	Gray laminate	48 / 105
56.0548.11.044)1	Cabinet (2 doors, white) 910x600x1060 mm / 35.8"x23.6"x41.7" gray	White laminate	48 / 105
56.0548.11.144)1	Cabinet (2 doors, white) 910x600x1060 mm / 35.8"x23.6"x41.7" gray	Gray laminate	48 / 105

MOBILE CABINET

Mobile cabinets are intended to complete laboratory benches.

Mobile cabinet is equipped with drawers and rolling castors.

Supplied pre-assembled.



Mobile cabinets (5 drawers)

PRODUCT CODE	ITEM AND DIMENSIONS (L X W X H)	WORKTOP MATERIAL	WEIGHT KG/LBS
56.0491.50.00-01	Mobile cabinet (5 drawers, white) 460x530x640 mm / 18.1"x20.9"x25.2"	Steel	34/74
56.0491.50.10-01	Mobile cabinet (5 drawers, gray) 460x530x640 mm / 18.1"x20.9"x25.2"	Steel	34/74



MOBILE CABINET

Mobile cabinets (3 drawers)

PRODUCT CODE	ITEM AND DIMENSIONS (L X W X H)	WORKTOP MATERIAL	WEIGHT KG/LBS
56.0491.30.00-01	Mobile cabinet (white) 460x530x640 mm / 18.1"x20.9"x25.2" 3 drawers	Steel	31 / 68
56.0491.30.10-01	Mobile cabinet (gray) 460x530x640 mm / 18.1"x20.9"x25.2" 3 drawers	Steel	31 / 68

Mobile cabinets (2 drawers)

PRODUCT CODE	ITEM AND DIMENSIONS (L X W X H)	WORKTOP MATERIAL	WEIGHT KG/LBS
56.0507.00.00-01	Mobile cabinet (white) 460x530x640 mm / 18.1"x20.9"x25.2" 2 drawers	Steel	27 / 59
56.0507.00.10-01	Mobile cabinet (gray) 460x530x640 mm / 18.1"x20.9"x25.2" 2 drawers	Steel	27 / 59

Mobile cabinets (right hinged door)

PRODUCT CODE	ITEM AND DIMENSIONS (L X W X H)	WORKTOP MATERIAL	WEIGHT KG/LBS
56.0491.00.00-01	Mobile cabinet (white) 460x530x640 mm / 18.1"x20.9"x25.2" right hinged door	Steel	24 / 52
56.0491.00.10-01	Mobile cabinet (gray) 460x530x640 mm / 18.1"x20.9"x25.2" right hinged door	Steel	24 / 52

Mobile cabinets (left hinged door)

PRODUCT CODE	ITEM AND DIMENSIONS (L X W X H)	WORKTOP MATERIAL	WEIGHT KG/LBS
56.0491.10.00-01	Mobile cabinet (white) 460x530x640 mm / 18.1"x20.9"x25.2" left hinged door	Steel	24 / 52
56.0491.10.10-01	Mobile cabinet (gray) 460x530x640 mm / 18.1"x20.9"x25.2" left hinged door	Steel	24 / 52

LABORATORY CHAIRS AND STOOLS

Chair pad material - faux leather.
Chairs and stools can be either equipped with rolling castors or rests.



Office chair

PRODUCT CODE	ITEM AND DIMENSIONS	PAD MATERIAL	WEIGHT KG/LBS
56.0528.00.00	Office chair (rolling castors) height 410-540 mm / 16.1"-21.3"	faux leather	6 / 13
56.0528.10.00	Office chair (rests) height 410-540 mm / 16.1"-21.3"	faux leather	6 / 13
56.0528.00.01	Office chair (rolling castors) height 410-540 mm / 16.1"-21.3"	polyurethane	9 / 19
56.0528.10.01	Office chair (rests) height 410-540 mm / 16.1"-21.3"	polyurethane	9 / 19

Laboratory chair

PRODUCT CODE	ITEM AND DIMENSIONS	PAD MATERIAL	WEIGHT KG/LBS
56.0529.00.00	Laboratory chair (rolling castors) height 620-760 mm / 24.4" - 29.9"	faux leather	8 / 17
56.0529.10.00	Laboratory chair (rests) height 620-760 mm / 24.4" - 29.9"	faux leather	8 / 17
56.0529.00.01	Laboratory chair (rolling castors) height 620-760 mm / 24.4" - 29.9"	polyurethane	9 / 19
56.0529.10.01	Laboratory chair (rests) height 620-760 mm / 24.4" - 29.9"	polyurethane	9 / 19

Laboratory stool

PRODUCT CODE	ITEM AND DIMENSIONS	PAD MATERIAL	WEIGHT KG/LBS
56.0530.00.00	Laboratory stool (rolling castors) height 620-760 mm / 24.4" - 29.9"	faux leather	7 / 15
56.0530.10.00	Laboratory stool (rests) height 620-760 mm / 24.4" - 29.9"	faux leather	7 / 15
56.0530.00.01	Laboratory stool (rolling castors) height 620-760 mm / 24.4" - 29.9"	polyurethane	7 / 15
56.0530.10.01	Laboratory stool (rests) height 620-760 mm / 24.4" - 29.9"	polyurethane	7 / 15

Office stool

PRODUCT CODE	ITEM AND DIMENSIONS	PAD MATERIAL	WEIGHT KG/LBS
56.0531.00.00	Office stool (rolling castors) height 410-540 mm / 16.1"-21.3"	faux leather	5 / 11
56.0531.10.00	Office stool (rests) height 410-540 mm / 16.1"-21.3"	faux leather	5 / 11
56.0531.00.01	Office stool (rolling castors) height 410-540 mm / 16.1"-21.3"	polyurethane	5 / 11
56.0531.10.01	Office stool (rests) height 410-540 mm / 16.1"-21.3"	polyurethane	5 / 11



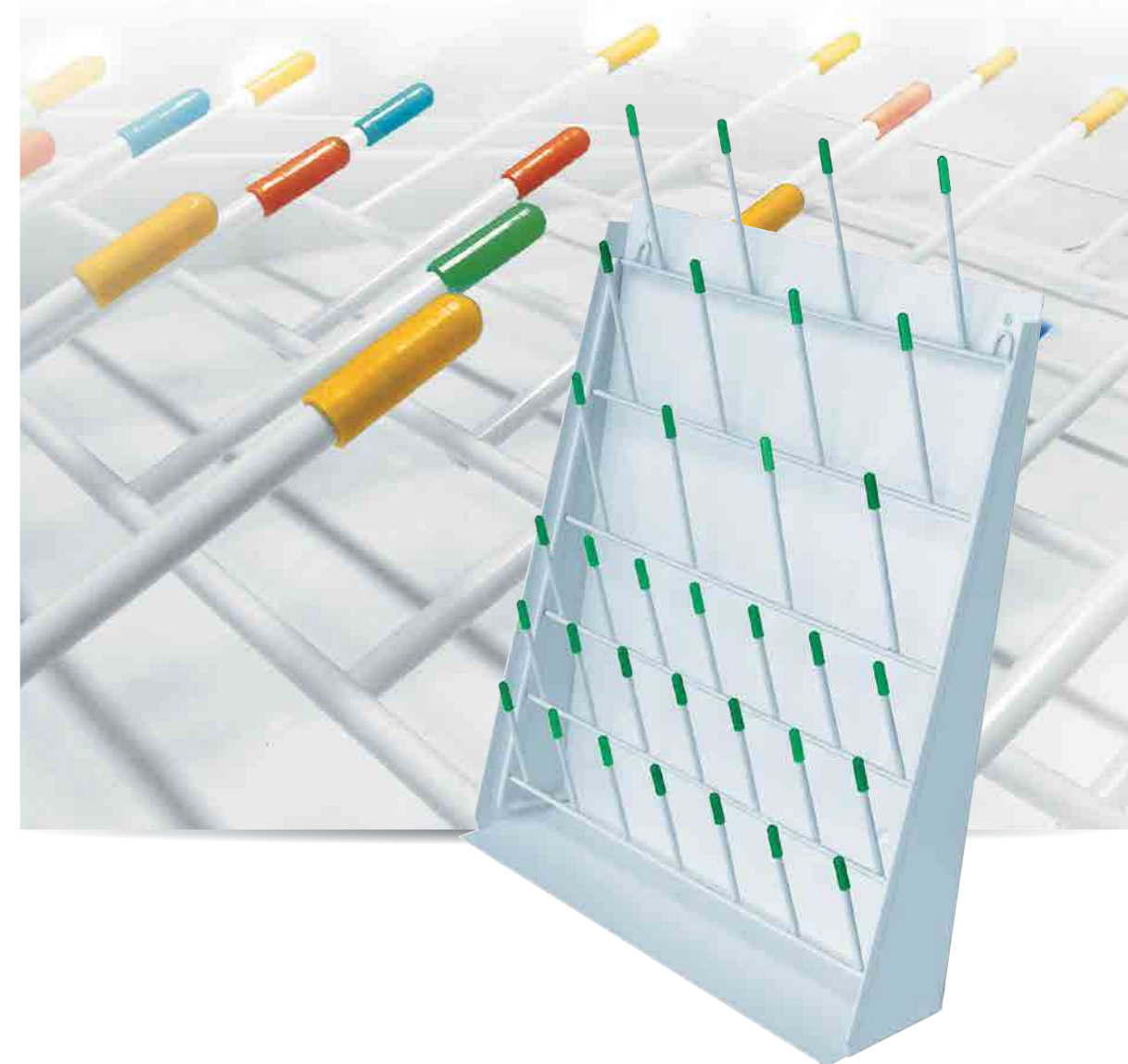
EXTRA ACCESSORIES FOR SINK BENCHES

Drying racks

Drying racks are intended for drying of laboratory ware. The rack is wall-mounted type.

The rack with support hook is fastened to single sink bench ECOLOGY.

PRODUCT CODE	ITEM	MATERIAL	WEIGHT KG/LBS
56.0155.0000-01	Drying rack (white)	Steel	5 / 11
56.0155.10.00-01	Drying rack (gray)	Steel	5 / 11
56.0155.00.01-01	Drying rack with support hooks (for sink bench)	Steel	5 / 11





STORAGE CABINET

Cabinets for storing reagents (2 sections, 4 doors)

Storage cabinets are intended for storing of dry chemical agents and nonaggressive liquids. Cabinet lockable doors are made of metal.

The storage cabinets stand on adjustable feet for floor unevenness compensation. Supplied either pre-assembled or non-assembled.

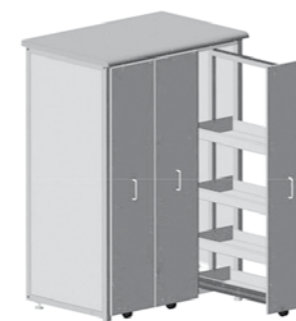
PRODUCT CODE	ITEM AND DIMENSIONS (L X W X H)	MATERIAL	WEIGHT KG/LBS
56.0516.00.00	Storage cabinet (2 sections, 4 doors) 905x435x1970 mm / 35.6"x17.1"x77.6" white	Steel	80 / 176
56.0516.10.00	Storage cabinet (2 sections, 4 doors) 905x435x1970 mm / 35.6"x17.1"x77.6" gray	Steel	80 / 176

Storage cabinets for laboratory ware (2 sections, 4 doors)

Storage cabinets are intended for storing of laboratory ware and laboratory instruments. Doors of the top part made of glass. Doors of the bottom part made of metal.

The storage cabinets stand on adjustable feet for floor unevenness compensation. Supplied either pre-assembled or non-assembled.

PRODUCT CODE	ITEM AND DIMENSIONS (L X W X H)	MATERIAL	WEIGHT KG/LBS
56.0518.00.00	Storage cabinet 905x435x1970 mm / 35.6"x17.1"x77.6" white	Steel	84 / 185
56.0518.10.00	Storage cabinet 905x435x1970 mm / 35.6"x17.1"x77.6" gray	Steel	84 / 185



Storage cabinet for storing of reagents (2 sections, 2 doors)

Storage cabinets are intended for storing of dry chemical agents and nonaggressive liquids. Cabinet lockable doors are made of metal.

The storage cabinets stand on adjustable feet for floor unevenness compensation. Supplied either pre-assembled or non-assembled.

PRODUCT CODE	ITEM AND DIMENSIONS (L X W X H)	MATERIAL	WEIGHT KG/LBS
56.0517.00.00	Storage cabinet for storing of reagents (2 sections, 2 doors) 605x435x1970 mm / 23.8"x17.1"x77.6" white	Steel	60 / 132
56.0517.10.00	Storage cabinet for storing of reagents (2 sections, 2 doors) 605x435x1970 mm / 23.8"x17.1"x77.6" gray	Steel	60 / 132

Storage cabinet for laboratory ware (2 sections, 2 doors)

Storage cabinets are intended for storing of laboratory ware and laboratory instruments. Door of the top part made of glass. Door of the bottom part made of metal.

The storage cabinets stand on adjustable feet for floor unevenness compensation. Supplied either pre-assembled or non-assembled.

PRODUCT CODE	ITEM AND DIMENSIONS (L X W X H)	MATERIAL	WEIGHT KG/LBS
56.0519.00.00	Storage cabinet for storing of laboratory ware (2 sections, 2 doors) 605x435x1970 mm / 23.8"x17.1"x77.6" white	Steel	60 / 132
56.0519.10.00	Storage cabinet for storing of laboratory ware (2 sections, 2 doors) 605x435x1970 mm / 23.8"x17.1"x77.6" gray	Steel	60 / 132

Pull-out cabinet (2 vertical drawers)

Pull-out cabinet is intended for storing of laboratory ware and laboratory instruments. The cabinets stand on adjustable feet.

Supplied pre-assembled.

PRODUCT CODE	ITEM AND DIMENSIONS (L X W X H)	MATERIAL	WEIGHT KG/LBS
56.0187.00.04-01	Storage cabinet with 2 vertical drawers 640x630x1350 mm / 25.2"x24.8"x53.1" white	Steel	75 / 165
56.0187.00.14-01	Storage cabinet with 2 vertical drawers 640x630x1350 mm / 25.2"x24.8"x53.1" white	Steel	75 / 165
56.0187.10.04-01	Storage cabinet with 2 vertical drawers 640x630x1350 mm / 25.2"x24.8"x53.1" gray	Steel	75 / 165
56.0187.10.14-01	Storage cabinet with 2 vertical drawers 640x630x1350 mm / 25.2"x24.8"x53.1" gray	Steel	75 / 165

Pull-out cabinet (3 vertical drawers)

Pull-out cabinet is intended for storing of laboratory ware and laboratory instruments. The cabinets stand on adjustable feet.

Supplied pre-assembled.

PRODUCT CODE	ITEM AND DIMENSIONS (L X W X H)	MATERIAL	WEIGHT KG/LBS
56.0265.00.04-01	Storage cabinet with 3 vertical drawers 930x630x1350 mm / 36.6"x24.8"x53.1" white	Steel	95 / 209
56.0265.00.14-01	Storage cabinet with 3 vertical drawers 930x630x1350 mm / 36.6"x24.8"x53.1" white	Steel	95 / 209
56.0265.10.04-01	Storage cabinet with 3 vertical drawers 930x630x1350 mm / 36.6"x24.8"x53.1" gray	Steel	95 / 209
56.0265.10.14-01	Storage cabinet with 3 vertical drawers 930x630x1350 mm / 36.6"x24.8"x53.1" gray	Steel	95 / 209

CLOTHES CABINET

Clothes cabinets are intended for storing of clothes in laboratories and other places.

Standard complete set includes head wear shelf, boot shelf, hanger rail, hooks, lock and keys.

The cabinets stand on adjustable feet.

Supplied either pre-assembled or non-assembled.



PRODUCT CODE	ITEM AND DIMENSIONS (L X W X H)	MATERIAL	WEIGHT KG/LBS
56.0522.10.00	Single clothes cabinet, gray 455x575x1970 mm / 17.9"x22.6"x77.6"	Steel	54 / 119
56.0523.10.00	Double clothes cabinet, gray 905x575x1970 mm / 35.6"x22.6"x77.6"	Steel	85 / 187

GAS CYLINDER CABINETS

Storage cabinets are intended for storing of compressed gas cylinders in laboratories near work stations. The storage cabinet protects gas cylinders from external actions. Side walls of the cabinet have holes for gas fitting connection to laboratory instruments.

To avoid uncontrolled moving of gas cylinders inside the storage cabinet, it is equipped with chains which fasten each gas cylinder upright. Storage cabinets are designed for storing one or two gas cylinders.



PRODUCT CODE	ITEM AND DIMENSIONS (L X W X H)	MATERIAL	WEIGHT KG/LBS
56.0520.10.00	Single-wing gas cylinder cabinet (gray) 355x325x1655 mm / 14"x12.8"x65.2"	Steel	32/70
56.0521.10.00	Double-wing gas cylinder cabinet (gray) 705x325x1655 mm / 27.8x12.8"x65.2"	Steel	53/116

**MULTIPURPOSE STORAGE CABINET**

Multipurpose storage cabinet is intended for storing of chemical agents, acids and combustible materials (in solid state or liquid form).

Storage cabinet is designed as 3 sections which are linked. 2 upper sections are intended for storing of hazardous materials. Both sections are equipped with 2 shelves.

-each section has individual ventilation duct;

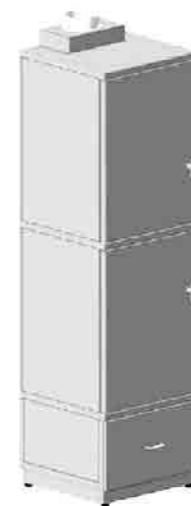
-lower section is a drawer for storing of different materials;

-covered with epoxy powder paint.

Section intended for storing of acids has additional polypropylene lining.

Shelves made of polypropylene.

The cabinet stands on adjustable rests.



PRODUCT CODE	ITEM AND DIMENSIONS (L X W X H)	MATERIAL	WEIGHT KG/LBS
56.0590.10.00-01	Cabinet for storing of acids and combustible matters 600x600x1950 mm / 23.6"x23.6"x76.8"	Steel	190 / 418
56.0590.20.00-01	Cabinet for storing of acids 600x600x1950 mm / 23.6"x23.6"x76.8"	Steel	195 / 489
56.0590.30.00-01	Cabinet for storing of combustible matters 600x600x1950 mm / 23.6"x23.6"x76.8"	Steel	185 / 407

**FUME HOOD FOR MUFFLE FURNACES
AND DRYING OVENS**

PRODUCT CODE	ITEM AND DIMENSIONS (L X W X H)	MATERIAL	WEIGHT KG/LBS
56.0525.00.03-01	Fume hood (white) 920x780x1820 mm / 36.2"x30.7"x71.7"	Steel	75 / 165
56.0525.10.03-01	Fume hood (gray) 920x780x1820 mm / 36.2"x30.7"x71.7"	Steel	75 / 165

Supplied pre-assembled

PRODUCT CODE	ITEM AND DIMENSIONS (L X W X H)	MATERIAL	WEIGHT KG/LBS
56.0553.00.03	Fume hood (white) 1210x870x1895 mm / 47.6"x34.3"x74.6"	Steel	80 / 176
56.0553.10.03	Fume hood (gray) 1210x870x1895 mm / 47.6"x34.3"x74.6"	Steel	80 / 176

Supplied pre-assembled





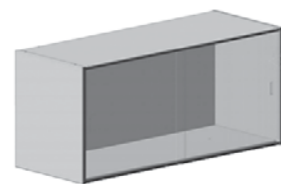
Service unit

PRODUCT CODE	ITEM AND DIMENSIONS (L X W X H)	MATERIAL	WEIGHT KG/LBS
56.0437.00.00	Service unit (electrical break automat and 4 sockets) 150x100x160 mm / 5.91"x3.94"x6.30" white; cable below	Steel	2 / 4
56.0437.00.01	Service unit (electrical break automat and 4 sockets) 150x100x160 mm / 5.91"x3.94"x6.30" white; cable sideward	Steel	2 / 4
56.0437.10.00	Service unit (electrical break automat and 4 sockets) 150x100x160 mm / 5.91"x3.94"x6.30" gray; cable below	Steel	2 / 4
56.0437.10.01	Service unit (electrical break automat and 4 sockets) 150x100x160 mm / 5.91"x3.94"x6.30" gray; cable sideward	Steel	2 / 4



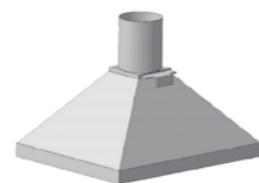
Wall bookshelf

PRODUCT CODE	ITEM AND DIMENSIONS (L X W X H)	MATERIAL	WEIGHT KG/LBS
56.0130.00.00-01	Wall bookshelf (white) 1200x340x400 mm / 47.2"x13.4"x15.7"	Steel	25 / 55
56.0130.10.00-01	Wall bookshelf (gray) 1200x340x400 mm / 47.2"x13.4"x15.7"	Steel	25 / 55
56.0542.00.00-01	Wall bookshelf (white) 1500x340x400 mm / 59.1"x13.4"x15.7"	Steel	32 / 70
56.0542.10.00-01	Wall bookshelf (gray) 1500x340x400 mm / 59.1"x13.4"x15.7"	Steel	32 / 70



Ventilation hood

PRODUCT CODE	ITEM AND DIMENSIONS (L X W X H)	MATERIAL	WEIGHT KG/LBS
56.0096.00.00-01	Ventilation hood (white) 550x700x500 mm / 21.7"x27.6"x19.7"	Stainless steel	7 / 15
56.0096.10.00-01	Ventilation hood (gray) 550x700x500 mm / 21.7"x27.6"x19.7"	Stainless steel	7 / 15



Shelf stand

Shelf stand is intended for storing of instruments and glassware in laboratories, warehouses and service areas. The shelf stand comes fitted with 6 shelves (3 shelves are adjustable).



PRODUCT CODE	ITEM AND DIMENSIONS (L X W X H)	MATERIAL	WEIGHT KG/LBS
56.0370.00.00	Shelf stand (6 shelves; white) 600x400x1980 mm / 23.6"x15.7"x78"	Steel	41 / 90
56.0370.10.00	Shelf stand (6 shelves; gray) 600x400x1980 mm / 23.6"x15.7"x78"	Steel	41 / 90

PRODUCT CODE	ITEM AND DIMENSIONS (L X W X H)	MATERIAL	WEIGHT KG/LBS
56.0371.00.00	Shelf stand (6 shelves; white) 900x400x1980 mm / 35.4"x15.7"x78"	Steel	49 / 108
56.0371.10.00	Shelf stand (6 shelves; gray) 900x400x1980 mm / 35.4"x15.7"x78"	Steel	49 / 108

PRODUCT CODE	ITEM AND DIMENSIONS (L X W X H)	MATERIAL	WEIGHT KG/LBS
56.0372.00.00	Shelf stand (6 shelves; white) 1200x400x1980 mm / 47.2"x15.7"x78"	Steel	57 / 125
56.0372.10.00	Shelf stand (6 shelves; gray) 1200x400x1980 mm / 47.2"x15.7"x78"	Steel	57 / 125





QUALITY AND MATERIALS

Laboratory furniture produced by ECROS Group is a modern multipurpose furniture made of metal that ensures its robustness and rigidity.

Advantages of ECROS Group laboratory furniture:

- solid metal structures are designed based on square and rectangular tubing (cross-section);
- fabricated frame is covered with epoxy paint;
- adjustable feet;
- possibility to choose suitable worktop material.

We use only certified and high-quality materials in the production of laboratory furniture.

The furniture can be supplied either pre-assembled or non-assembled.



Plumbing fixtures



Sink



Durcon



Polypropylene

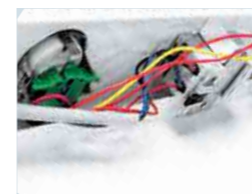


Ceramic

Siphons, inlet tubes and corrugated hoses are made of polypropylene that ensures its corrosion resistance.

Sinks are made of durcon, glass-reinforced plastic, polypropylene and stainless steel.

Electrical equipment



Three-wire
sockets

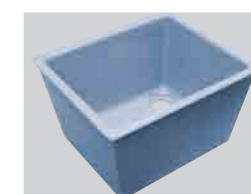


Electrical
break automat

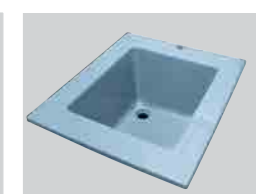


Luminescent
lighting unit

Drain sink for sink benches



Durcon



Glass-reinforced
plastic



Stainless steel



ECROS
group of companies

ECROSKHIM LTD
Production, wholesale
and retail

22, 17th line V.O.
199178, Saint-Petersburg, Russia

Tel.: **+7 812 3229600**
+7 812 4487610
+7 812 4493122
+7 812 4493123

Fax: **+7 812 4487600**
+7 812 4487611

E-mail: info@ecohim.ru
www.ecohim.ru

Our dealer

WWW.ECOHIM.RU